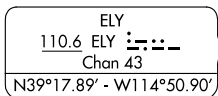


ASOS
120.625
SALT LAKE CENTER
133.45 317.625
UNICOM
122.8

TAKEOFF MINIMUMS

- Rwy 12: Standard with minimum climb of 280' per NM to 10600, or 5100-3 for climb in visual conditions.
- Rwy 18: Standard with minimum climb of 267' per NM to 10600, or 5100-3 for climb in visual conditions.
- Rwy 30: Standard with minimum climb of 539' per NM to 10600, or 5100-3 for climb in visual conditions.
- Rwy 36: Standard with minimum climb of 238' per NM to 10600, or 5100-3 for climb in visual conditions.

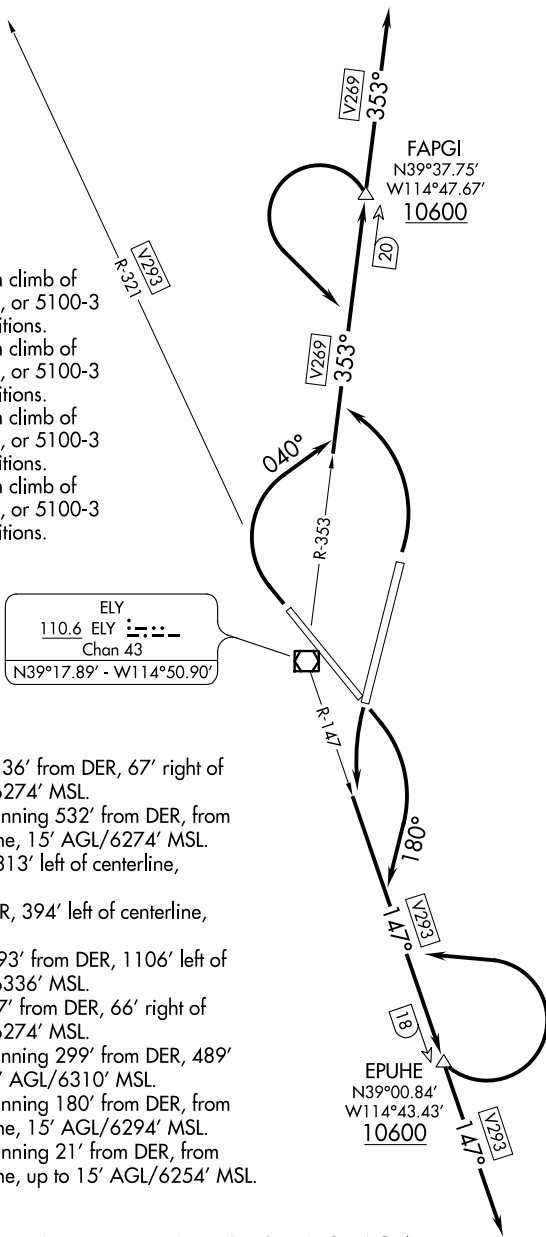


TAKEOFF OBSTACLE NOTES

- Rwy 12: Aircraft on taxiway, 136' from DER, 67' right of centerline, 15' AGL/6274' MSL. Vehicles on road beginning 532' from DER, from left to right of centerline, 15' AGL/6274' MSL. Pole 981' from DER, 313' left of centerline, 40' AGL/6295' MSL. Tower 2617' from DER, 394' left of centerline, 64' AGL/6334' MSL. Antenna on tower 2893' from DER, 1106' left of centerline, 66' AGL/6336' MSL.
- Rwy 18: Aircraft on taxiway 17' from DER, 66' right of centerline, 15' AGL/6274' MSL. Multiple hangars beginning 299' from DER, 489' right of centerline, 35' AGL/6310' MSL. Vehicles on road beginning 180' from DER, from left to right of centerline, 15' AGL/6294' MSL.
- Rwy 30: Vehicles on road beginning 21' from DER, from left to right of centerline, up to 15' AGL/6254' MSL.

NOTE: Chart not to scale.

(NARRATIVE ON FOLLOWING PAGE)



SW-4, 02 DEC 2021 to 30 DEC 2021

SW-4, 02 DEC 2021 to 30 DEC 2021