

# DOVER FIVE DEPARTURE (RNAV)

**TOP ALTITUDE:  
ASSIGNED BY ATC**

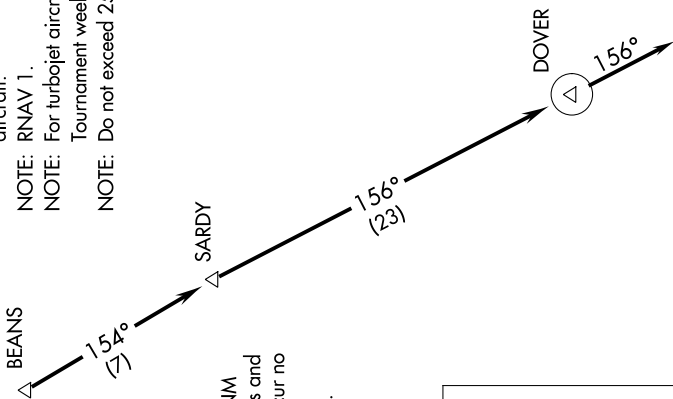
NOTE: DME/DME/IRU or GPS required.  
NOTE: RADAR required for non-GPS equipped aircraft.

NOTE: RNAV 1.

NOTE: For turbojet aircraft during Masters Golf Tournament week.

NOTE: Do not exceed 250K until advised by ATC.

SE-2, 02 DEC 2021 to 30 DEC 2021



NOTE: Chart not to scale.

AUGUSTA DEP CON ★  
119.15 284.625  
CLNC DEL 126.075  
CTAF  
122.8

### TAKEOFF MINIMUMS

Rwys 7, 25: Standard.  
Rwy 1: 300-1/4 or standard with minimum climb of 216' per NM to 700, or alternatively, with standard takeoff minimums and a normal 200' per NM climb gradient, takeoff must occur no later than 1400' prior to DER.  
Rwy 19: Standard with minimum climb of 201' per NM to 1000.

### DEPARTURE ROUTE DESCRIPTION

TAKEOFF RWYS 1, 7, 19, 25: Climb heading assigned by ATC for vectors to BEANS, then on depicted route to DOVER, then on heading 156° for RADAR vectors, thence. . . .  
. . . .maintain altitude assigned by ATC. Expect clearance to filed altitude/flight level within 10 minutes after departure.

SE-2, 02 DEC 2021 to 30 DEC 2021

# DOVER FIVE DEPARTURE (RNAV)