

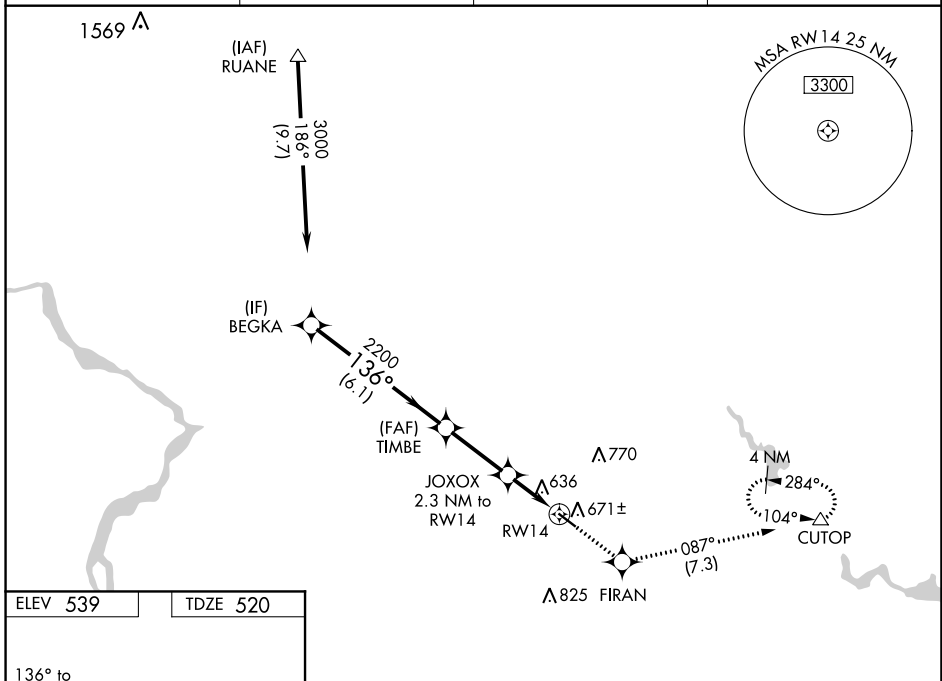
WAAS CH 77502 W14A	APP CRS 136°	Rwy Idg TDZE Apt Elev	4202 520 539
--	------------------------	-----------------------------	---

RNAV (GPS) RWY 14

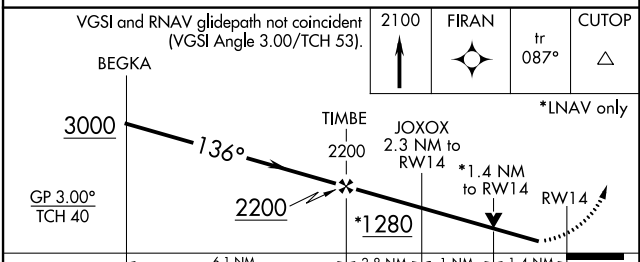
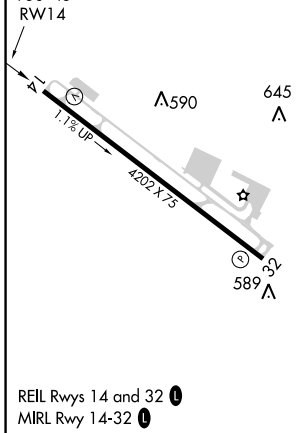
MONTGOMERY COUNTY AIRPARK (GAI)

RNP APCH.	<p>Baro-VNAV NA when using Washington Dulles Intl altimeter setting. For uncompensated Baro-VNAV systems, LNAV/VNAV NA below -16°C or above 36°C. When local altimeter setting not received, use Washington Dulles Intl altimeter setting and increase all DA/MDAs 80 feet and all visibilities ¼ mile. Rwy 14 helicopter visibility reduction below ¼ SM NA.</p>	<p>MISSED APPROACH: Climb to 2100 direct FIRAN and on track 087° to CUTOP and hold.</p>
-----------	---	---

AWOS-3PT 128.275	POTOMAC APP CON 128.7 307.9	CLNC DEL 121.6	UNICOM 123.075 (CTAF) 1
----------------------------	---------------------------------------	--------------------------	--



ELEV 539	TDZE 520
----------	----------



CATEGORY	A	B	C	D
LPV DA	789-1 269 (300-1)			
LNAV/VNAV DA	919-1½ 399 (400-1½)			
LNAV MDA	980-1	460 (500-1)	980-1⅜ 460 (500-1⅜)	980-1½ 460 (500-1½)

NE-3, 02 DEC 2021 to 30 DEC 2021

NE-3, 02 DEC 2021 to 30 DEC 2021