

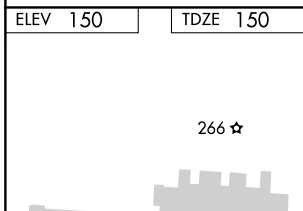
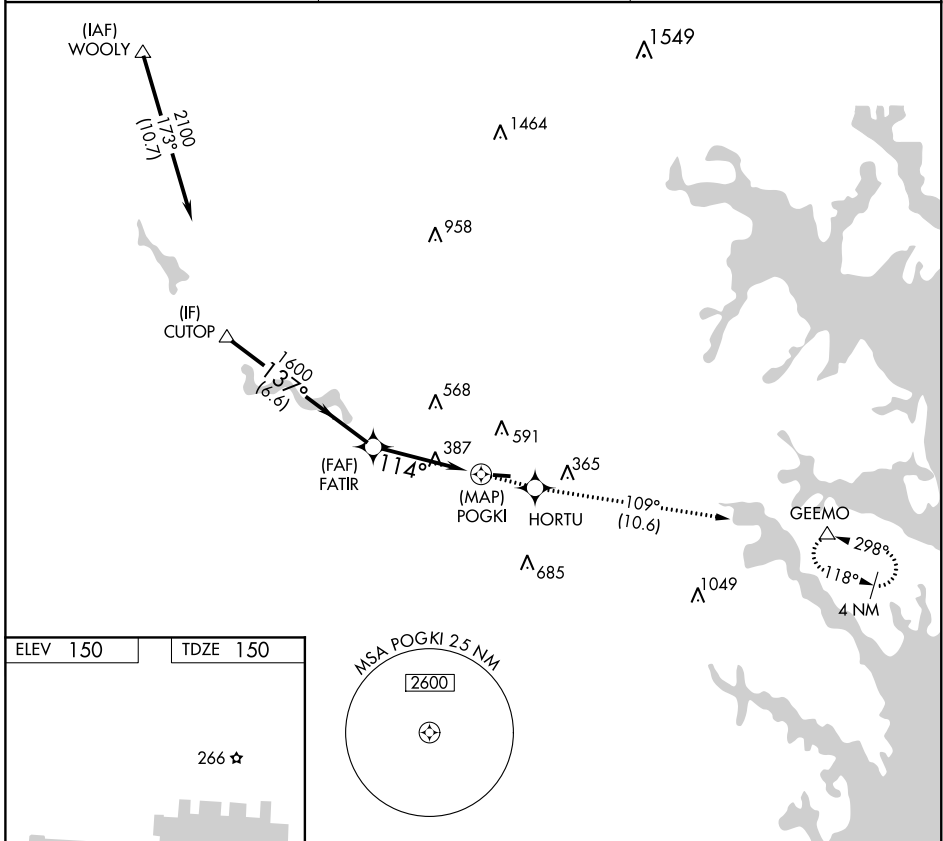
APP CRS	Rwy Idg	3000
114°	TDZE	150
	Apt Elev	150

RNAV (GPS) RWY 10

TIPTON (FME)

RNP APCH.	MISSED APPROACH: Climb to 2200 direct HORTU and on track 109° to GEEMO and hold.
Procedure NA at night. Rwy 10 helicopter visibility reduction below 1 SM NA.	

AWOS-3 123.925	POTOMAC APP CON 119.7 290.475	UNICOM 123.05 (CTAF) 0
--------------------------	---	----------------------------------



	CUTOP	Visual Segment - Obstacles.	2200	HORTU	tr 109°	GEEMO
	2100	137°				
		FATIR				
		1600				
		114°				
		POGKI				
		6.6 NM		4 NM		0.5 NM
CATEGORY	A	B	C	D		
LNNAV MDA	780-1	630 (700-1)			NA	
CIRCLING	820-1 670 (700-1)	960-1 810 (900-1)			NA	

NE-3, 02 DEC 2021 to 30 DEC 2021

NE-3, 02 DEC 2021 to 30 DEC 2021