

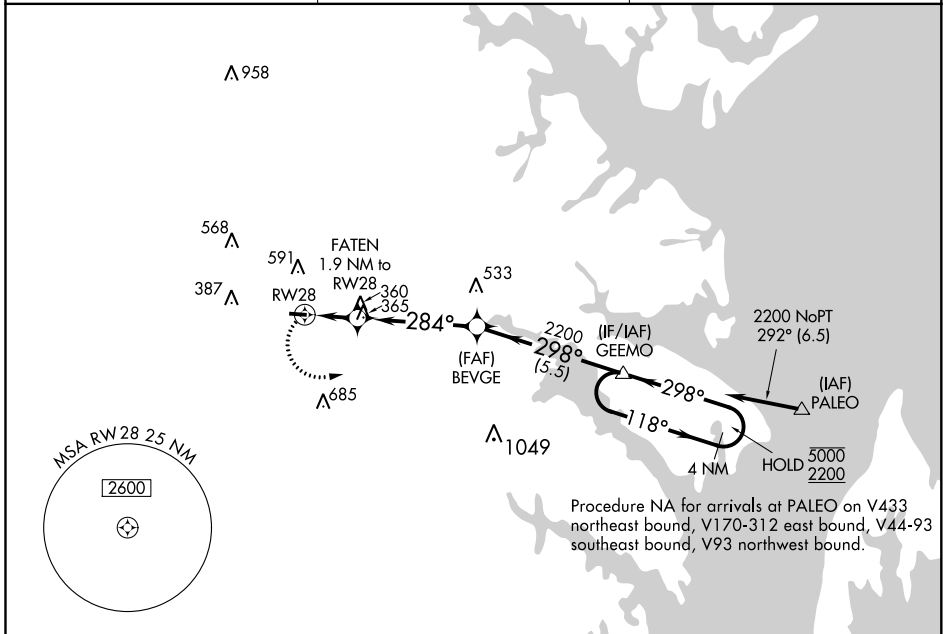
APP CRS 284°	Rwy Idg TDZE Apt Elev	3000 150 150
------------------------	-----------------------------	---

RNAV (GPS) RWY 28

TIPTON (FME)

RNP APCH.	MISSED APPROACH: Climbing left turn to 2200 direct GEEMO and hold.
Procedure NA at night. Rwy 28 helicopter visibility reduction below 1 SM NA.	

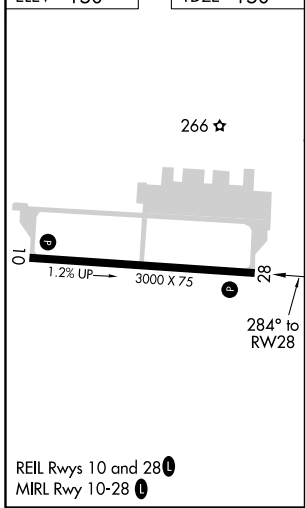
AWOS-3 123.925	POTOMAC APP CON 119.7 290.475	UNICOM 123.05 (CTAF) 0
--------------------------	---	----------------------------------



NE-3, 02 DEC 2021 to 30 DEC 2021

NE-3, 02 DEC 2021 to 30 DEC 2021

ELEV 150	TDZE 150
----------	----------



2200	GEEMO	VGSI and descent angles not coincident (VGSI Angle 4.00/TCH 57).		
<p>BEVGE GEEMO 4 NM Holding Pattern</p> <p>FATEN 1.9 NM to RWY 28</p> <p>2200 118° 5000 2200</p> <p>298° 298°</p> <p>800 ≤ 3.05° TCH 40</p> <p>1.9 NM 4.3 NM 5.5 NM</p>				
CATEGORY	A	B	C	D
LNAV MDA	620-1	470 (500-1)		NA
CIRCLING	820-1 670 (700-1)	960-1 810 (900-1)		NA