

VOR/DME MOP <b>110.6</b> Chan <b>43</b>	APP CRS <b>284°</b>	Rwy Idg TDZE <b>753</b> Apt Elev <b>755</b>	<b>5000</b>
---	------------------------	---	-------------

**VOR RWY 27**  
MOUNT PLEASANT MUNI (MOP)

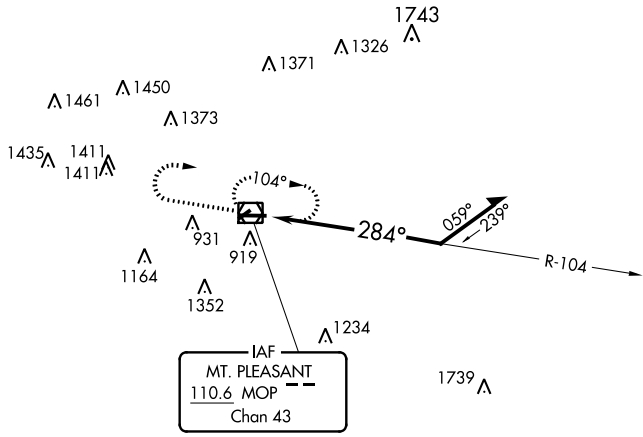
**⚠** When local altimeter setting not received, use Alma altimeter setting and increase all MDA 60 feet, S-27 Cat D and Circling Cat C visibilities ¼ mile. VDP NA when using Alma altimeter setting. Circling NA to Rwy 5 and 23. Rwy 27 helicopter visibility reduction below ¾ SM NA.

**MISSED APPROACH:** Climb to 2400 then right turn direct MOP VOR/DME and hold.

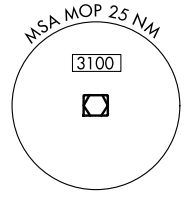
AWOS-3  
**133.025**

GREAT LAKES APP CON ★  
**126.45 235.625**

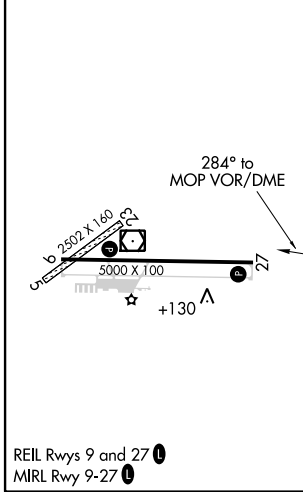
UNICOM  
**123.0** (CTAF) **0**



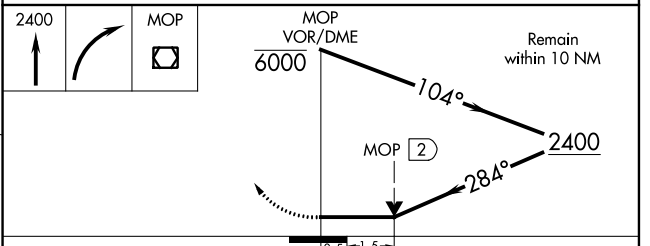
IAF  
MT. PLEASANT  
110.6 MOP  
Chan 43



ELEV 755	TDZE 753
----------	----------



REIL Rwy 9 and 27 **0**  
MIRL Rwy 9-27 **0**



CATEGORY	A	B	C	D
S-27	1260-1	507 (600-1)	1260-1½	507 (600-1½)
CIRCLING	1260-1	505 (600-1)	1400-1¾ 645 (700-1¾)	1700-3 945 (1000-3)

EC-1, 02 DEC 2021 to 30 DEC 2021

EC-1, 02 DEC 2021 to 30 DEC 2021