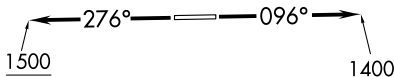


**TOP ALTITUDE:  
ASSIGNED BY ATC**

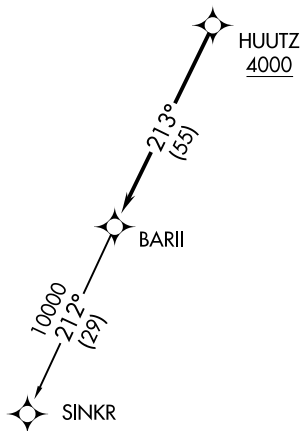
AWOS-3  
119.475  
CTAF  
123.05  
DETROIT DEP CON  
134.3 284.0



TAKEOFF MINIMUMS:

Rwy 9: Standard.

Rwy 27: Standard with minimum climb  
of 476' per NM to 1500.



NOTE: RNAV 1.

NOTE: RADAR required.

NOTE: DME/DME/IRU or GPS required.

NOTE: Turbojet departures at/above 10000,  
maintain 280K until advised by ATC.

NOTE: Chart not to scale.



DEPARTURE ROUTE DESCRIPTION

TAKEOFF RUNWAY 9: Climb on heading 096° to 1400 then as assigned for RADAR vectors to cross HUUTZ at or above 4000, thence....

TAKEOFF RUNWAY 27: Climb on heading 276° to 1500 then as assigned for RADAR vectors to cross HUUTZ at or above 4000, thence....

....on track 213° to BARII, then on (transition). Maintain ATC assigned altitude, expect filed altitude 10 minutes after departure.

SINKR TRANSITION (BARI2.SINKR):