

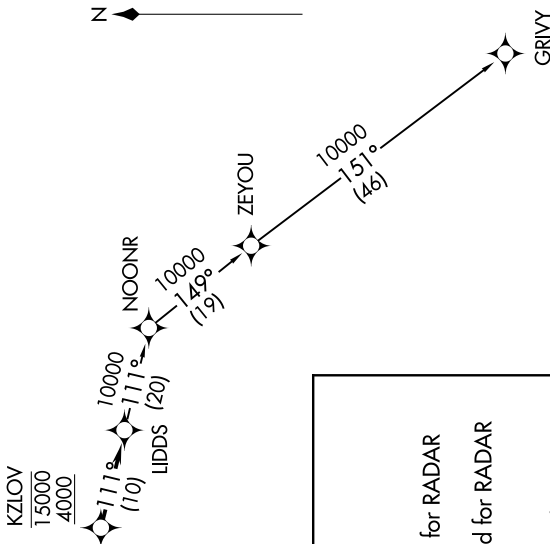
AWOS-3
119.475
CTAF
123.05
DETROIT DEP CON
134.3 284.0

TAKEOFF MINIMUMS:
Rwy 9: Standard.
Rwy 27: Standard with minimum climb
of 476' per NM to 1500.

EC-1, 02 DEC 2021 to 30 DEC 2021



**TOP ALTITUDE:
ASSIGNED BY ATC**



NOTE: RNAV 1.
NOTE: RADAR required.
NOTE: DME/DME/IRU or GPS required.
NOTE: Turbojet departures at/above 10000,
maintain 280K until advised by ATC.

DEPARTURE ROUTE DESCRIPTION

TAKEOFF RUNWAY 9: Climb on heading 096° to 1400 then as assigned for RADAR vectors to cross KZIOV between 4000 and 15000, thence....
TAKEOFF RUNWAY 27: Climb on heading 276° to 1500 then as assigned for RADAR vectors to cross KZIOV between 4000 and 15000, thence....
....on track 111° to LIDDS, then on (transition). Maintain ATC assigned altitude, expect filed altitude 10 minutes after departure.

GRIVY TRANSITION (LIDDS2.GRIVY):

NOTE: Chart not to scale.