

WAAS CH <b>58314</b> <b>W31A</b>	APP CRS <b>311°</b>	Rwy ldg TDZE Apt Elev	<b>6401</b> <b>1450</b> <b>1470</b>
--	------------------------	-----------------------------	---

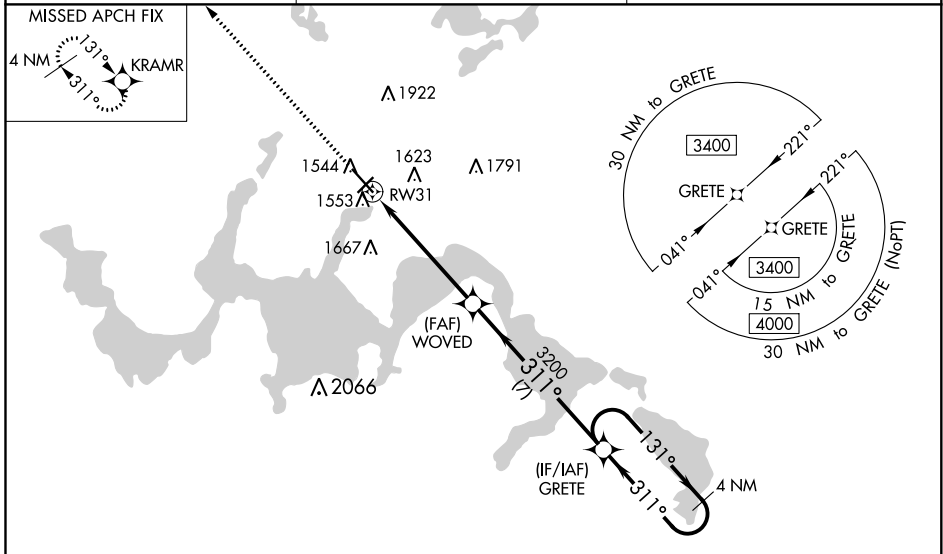
# RNAV (GPS) RWY 31

DEVILS LAKE RGNL (DVL)

**⚠** For uncompensated Baro-VNAV systems, LNAV/VNAV NA below -17°C (2°F) or above 54°C (130°F). DME/DME RNP-0.3 NA. Baro-VNAV and VDP NA when using Cando altimeter setting. For inop MALS, increase LNAV/VNAV all Cats visibility to 7/8, LNAV Cats C and D visibility to 1 mile. When local altimeter setting not received, use Cando altimeter setting and increase all DA 63 feet, and all MDA 80 feet, increase LNAV/VNAV all Cats visibility 1/8 mile, LNAV and Circling Cats C and D visibility 1/4 mile. For inop MALS when using Cando altimeter setting, increase LPV all Cats visibility to 7/8 mile.

**MALS** **MISSED APPROACH:** Climb to 3400 direct KRAMR and hold.

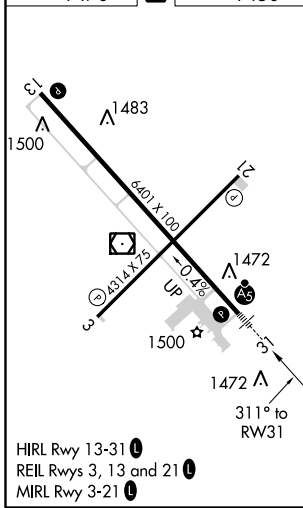
AWOS-3PT <b>125.875</b>	MINNEAPOLIS CENTER <b>124.2 270.3</b>	UNICOM <b>122.8 (CTAF) 0</b>
----------------------------	--	---------------------------------



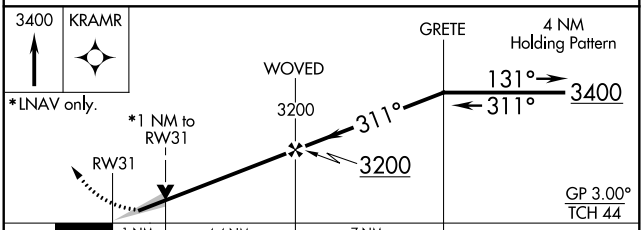
NC-1, 02 DEC 2021 to 30 DEC 2021

NC-1, 02 DEC 2021 to 30 DEC 2021

ELEV 1470	<b>D</b>	TDZE 1450
-----------	----------	-----------



HIRL Rwy 13-31 **0**  
REIL Rwy 3, 13 and 21 **0**  
MIRL Rwy 3-21 **0**



CATEGORY	A	B	C	D
LPV DA		1650-1/2	200 (200-1/2)	
LNAV/VNAV DA		1721-1/2	271 (300-1/2)	
LNAV MDA	1820-1/2	370 (400-1/2)	1820-5/8	370 (400-5/8)
<b>C</b> CIRCLING	2000-1	530 (600-1)	2240-2 1/4 770 (800-2 1/4)	2240-2 1/2 770 (800-2 1/2)