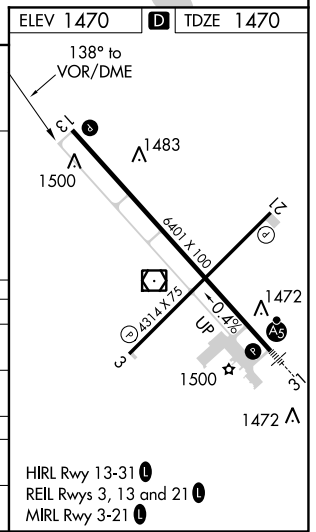
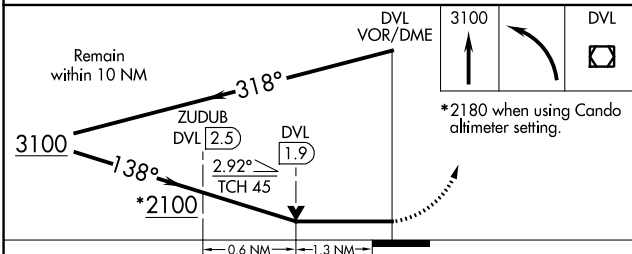
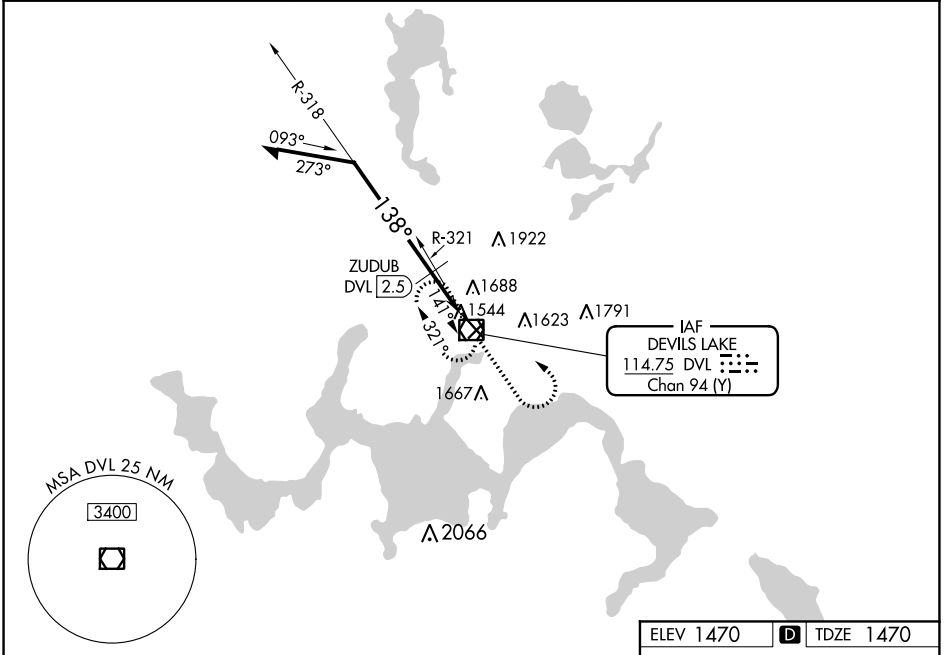


VOR/DME DVL 114.75 Chan 94 (Y)	APP CRS 138°	Rwy Idg TDZE Apt Elev	6401 1470 1470
--	------------------------	-----------------------------	---

VOR RWY 13
DEVILS LAKE RGNL (DVL)

<p>⚠ VDP NA with Cando altimeter setting. When local altimeter setting not received, use Cando altimeter setting and increase all MDA 80 feet, and increase S-13 and Circling Cats C and D visibility ¼ mile, increase ZUDUB fix minimums S-13 and Circling Cats C and D visibility ¼ mile.</p>	<p>MISSED APPROACH: Climb to 3100 then left turn direct DVL VOR/DME and hold.</p>	
<p>AWOS-3PT 125.875</p>	<p>MINNEAPOLIS CENTER 124.2 270.3</p>	<p>UNICOM 122.8 (CTAF) 0</p>



CATEGORY	A	B	C	D
S-13	2100-1	630 (700-1)	2100-1¾	630 (700-1¾)
C CIRCLING	2100-1	630 (700-1)	2240-2¼ 770 (800-2¼)	2240-2½ 770 (800-2½)
ZUDUB FIX MINIMUMS (DME REQUIRED)				
S-13	1940-1	470 (500-1)	1940-1¾	470 (500-1¾)
C CIRCLING	2000-1	530 (600-1)	2240-2¼ 770 (800-2¼)	2240-2½ 770 (800-2½)

NC-1, 02 DEC 2021 to 30 DEC 2021

NC-1, 02 DEC 2021 to 30 DEC 2021