

VOR/DME DVL <b>114.75</b> Chan <b>94 (Y)</b>	APP CRS <b>303°</b>	Rwy Idg TDZE <b>1450</b> Apt Elev <b>1470</b>
--	------------------------	---

# VOR RWY 31

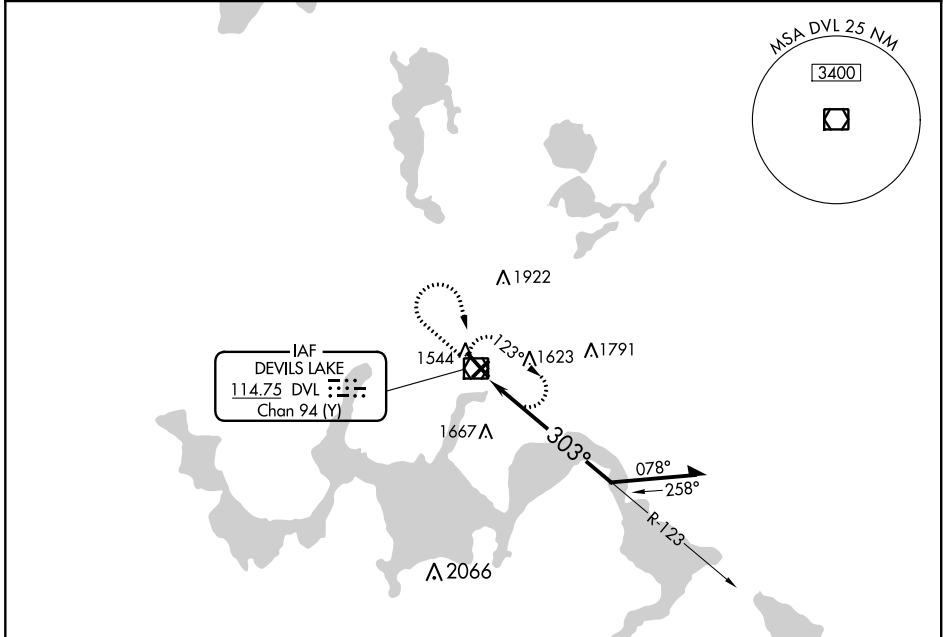
DEVILS LAKE RGNL (DVL)

**⚠** When local altimeter setting not received, use Cando altimeter setting and increase all MDA 80 feet, increase S-31 Cats C and D visibility 1/8 mile, and Circling Cats C and D visibility 1/4 mile.

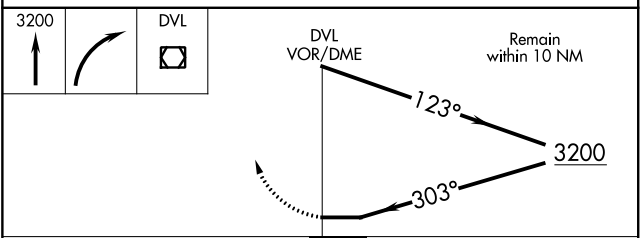
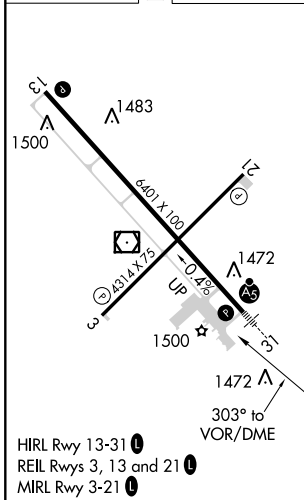
**MALSR**

**MISSED APPROACH:** Climb to 3200 then right turn direct DVL VOR/DME and hold.

AWOS-3PT <b>125.875</b>	MINNEAPOLIS CENTER <b>124.2 270.3</b>	UNICOM <b>122.8 (CTAF)</b>
----------------------------	--	-------------------------------



ELEV <b>1470</b>	<b>D</b>	TDZE <b>1450</b>
------------------	----------	------------------



CATEGORY	A	B	C	D
S-31	2020-1/2 570 (600-1/2)		2020-1 570 (600-1 1/4)	
<b>C</b> CIRCLING	2020-1 550 (600-1)		2240-2 1/4 770 (800-2 1/4)	2240-2 1/2 770 (800-2 1/2)

NC-1, 02 DEC 2021 to 30 DEC 2021

NC-1, 02 DEC 2021 to 30 DEC 2021