

WAAS CH 40235 W28A	APP CRS 276°	Rwy Idg TDZE Apt Elev	3181 308 308
--	------------------------	-----------------------------	---

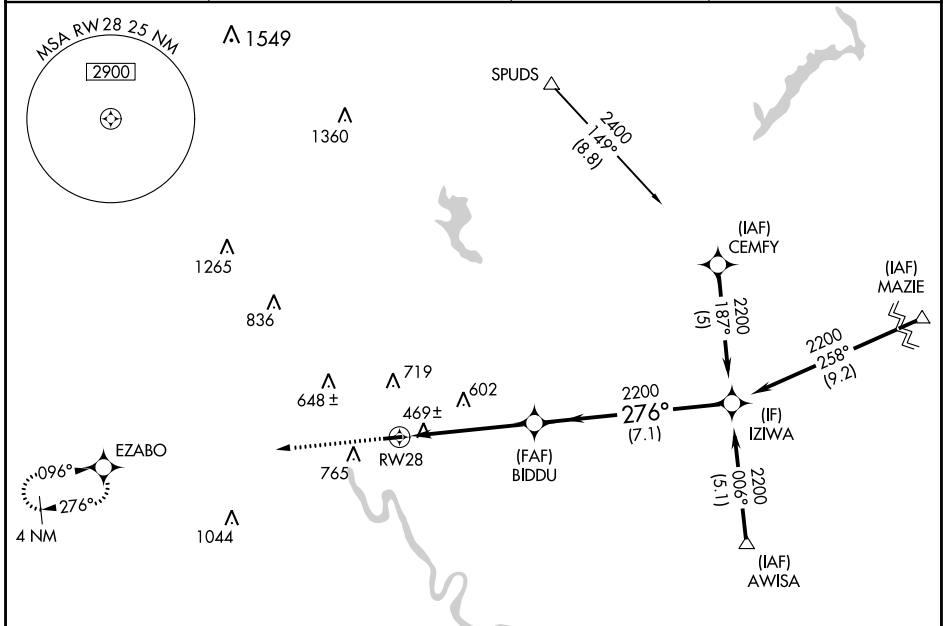
RNAV (GPS) RWY 28

HERITAGE FLD (PTW)

⚠ Circling NA south of Rwy 10-28. DME/DME RNP-0.3 NA. VDP and Baro-VNAV NA when using Wings Fld altimeter setting. When local altimeter setting not received, use Wings Fld altimeter setting and increase all DA 35 feet and all MDA 40 feet, increase LPV all Cats visibilities 1/8 mile. Helicopter visibility reduction below 3/4 SM NA. For uncompensated Baro-VNAV systems, LNAV/VNAV NA below -15°C (5°F) or above 54°C (130°F).

MISSED APPROACH:
Climb to 2600 direct EZABO and hold.

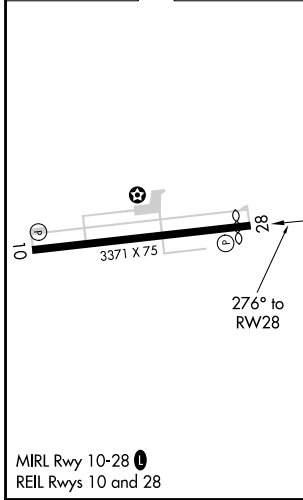
ASOS 119.425	PHILADELPHIA APP CON 126.85 263.125	CLNC DEL 118.55	UNICOM 122.7 (CTAF) 0
------------------------	---	---------------------------	---------------------------------



NE-4, 02 DEC 2021 to 30 DEC 2021

NE-4, 02 DEC 2021 to 30 DEC 2021

ELEV 308	TDZE 308
-----------------	-----------------



2600	EZABO	VGS1 and RNAV glidepath not coincident (VGS1 Angle 3.00/TCH 45).		
	BIDDU 2200	IZIWA 2200		
*LNAV only		*1.4 NM to RWY 28		
	RWY 28	276°	GP 3.55° TCH 60	
	1.4 NM	3.5 NM	7.1 NM	
CATEGORY	A	B	C	D
LPV DA	652-1	344 (400-1)		NA
LNAV/VNAV DA	779-1 3/8	471 (500-1 3/8)		NA
LNAV MDA	820-1	512 (600-1)		NA
C CIRCLING	940-1	632 (700-1)		NA