

VOR/DME GDM <b>110.6</b> Chan <b>43</b>	APP CRS <b>023°</b>	Rwy Idg TDZE Apt Elev <b>1040</b>	<b>N/A</b> <b>N/A</b> <b>1040</b>
---	------------------------	--	---

# VOR-A

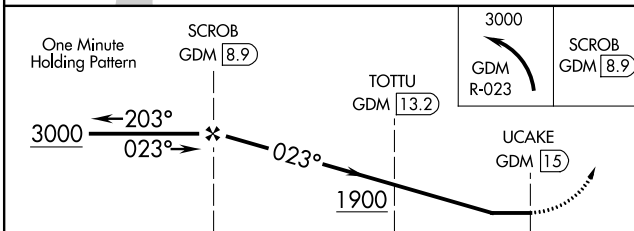
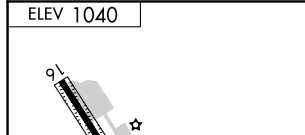
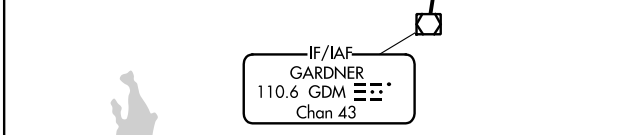
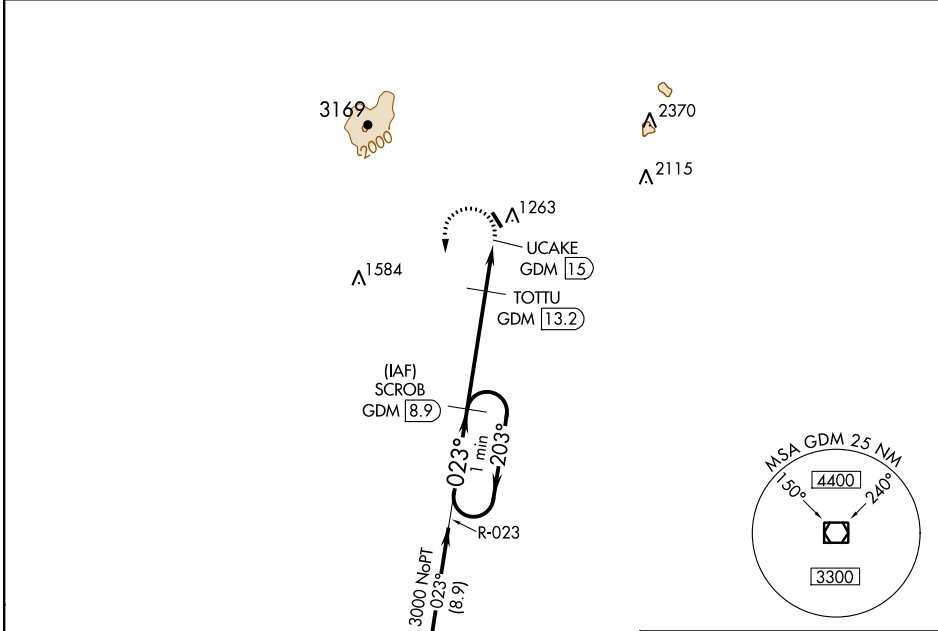
JAFFREY/SILVER RANCH (A/FN)

DME required.

**⚠** When local altimeter setting not received, use KEENE altimeter setting and increase all MDA 120 feet; increase Cat B and TOTU fix minimums all Cats visibility ¼ mile. Procedure NA at night. Rwy 16 and 34 helicopter visibility reduction below 1 SM NA. Rwy 16 and 34 helicopter visibility reduction below 1 SM NA.

MISSED APPROACH: Climbing left turn to 3000 on GDM VOR/DME R-023 to SCROB/GDM 8.9 DME and hold.

ASOS <b>135.875</b>	BOSTON CENTER <b>123.75 338.2</b>	UNICOM <b>122.8 (CTAF)</b>
------------------------	--------------------------------------	-------------------------------



CATEGORY	A	B	C	D
CIRCLING	1900-1¼	860 (900-1¼)	NA	NA
TOTU FIX MINIMUMS				
CIRCLING	1780-1 740 (800-1)	1820-1 780 (800-1)	NA	NA

ELEV 1040				
023° 6.1 NM from FAF				
LIRL Rwy 16-34				
FAF to MAP 6.1 NM				
Knots	60	90	120	150
Min:Sec	6:06	4:04	3:03	2:26
	2:02			

NE-1, 02 DEC 2021 to 30 DEC 2021

NE-1, 02 DEC 2021 to 30 DEC 2021

# VOR-A