

VORTAC TRV <b>117.3</b> Chan <b>120</b>	APP CRS <b>157°</b>	Rwy Idg <b>4755</b> TDZE <b>23</b> Apt Elev <b>23</b>
-----------------------------------------------	------------------------	-------------------------------------------------------------

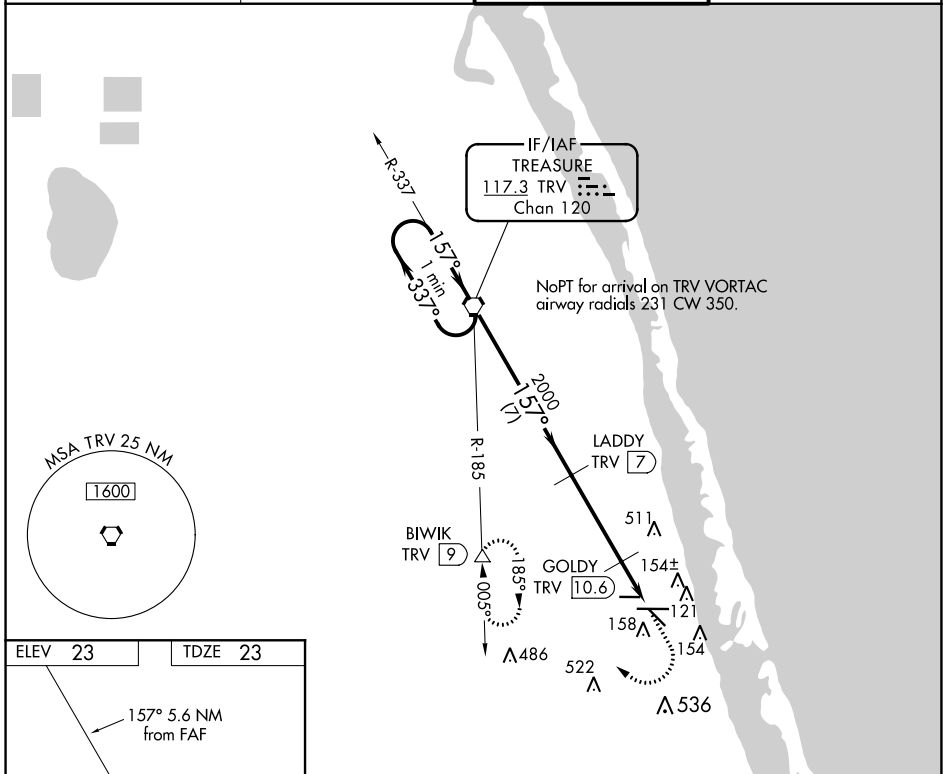
# VOR/DME RWY 14

TREASURE COAST INTL (FPR)

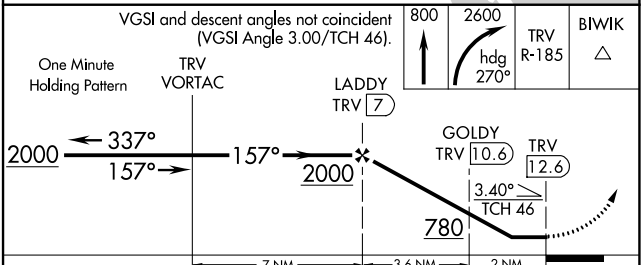
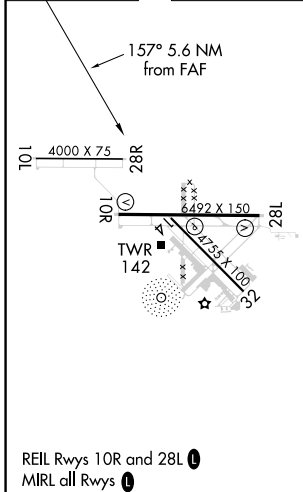
**⚠** When local altimeter setting not received, use Vero Beach altimeter setting and increase all MDA 40 feet; increase S-14 visibility Cats C/D  $\frac{1}{8}$  SM; increase Circling visibility Cat C/D  $\frac{1}{4}$  SM. Helicopter visibility reduction below 1 SM NA. Night Landing Rwy 14 NA.

**MISSED APPROACH:** Climb to 800 then climbing right turn to 2600 on heading 270° and TRV VORTAC R-185 to BIWIK/TRV 9 DME and hold.

ATIS <b>134.825</b>	PALM BEACH APP CON <b>132.8</b>	FORT PIERCE TOWER ★ <b>128.2 (CTAF) 0</b>	GND CON (GCO) <b>119.55</b>
------------------------	------------------------------------	----------------------------------------------	--------------------------------



ELEV 23	TDZE 23
---------	---------



CATEGORY	A	B	C	D
S-14	420-1	397 (400-1)	420-1 $\frac{1}{8}$	397 (400-1 $\frac{1}{8}$ )
<b>C</b> CIRCLING	460-1 437 (500-1)	480-1 457 (500-1)	880-2 $\frac{1}{2}$ 857 (900-2 $\frac{1}{2}$ )	880-2 $\frac{3}{4}$ 857 (900-2 $\frac{3}{4}$ )

SE-3, 02 DEC 2021 to 30 DEC 2021

SE-3, 02 DEC 2021 to 30 DEC 2021