

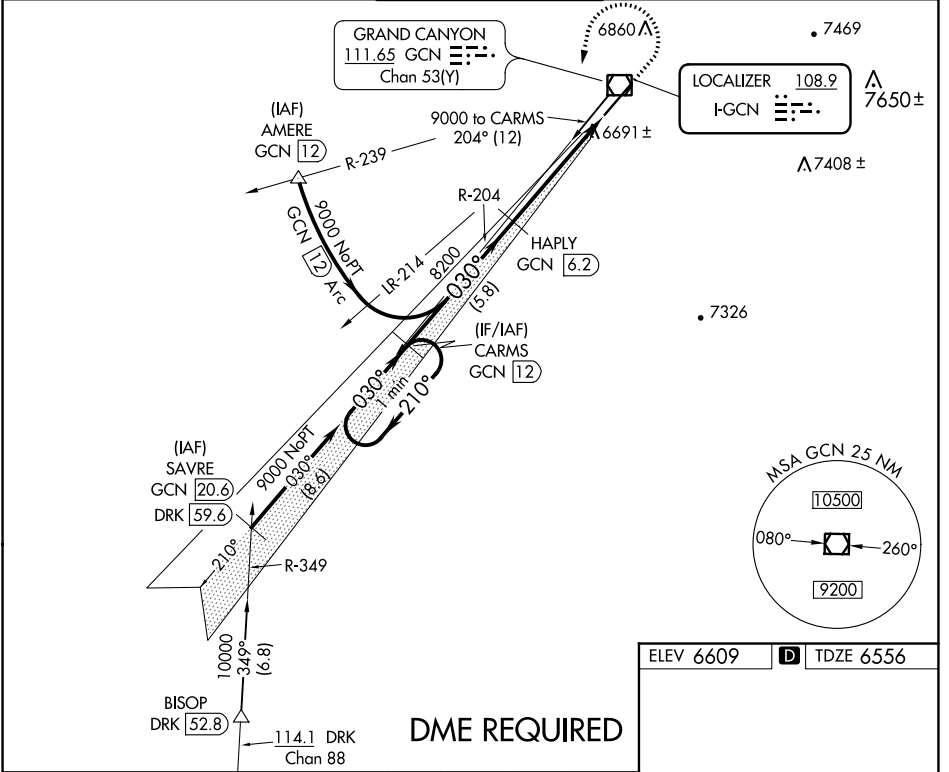
LOC I-GCN <b>108.9</b>	APP CRS <b>030°</b>	Rwy Idg <b>8999</b>
		TDZE <b>6556</b>
		Apt Elev <b>6609</b>

# ILS or LOC RWY 3

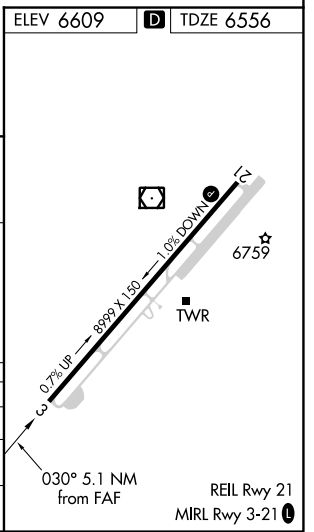
GRAND CANYON NTL PARK (GCN)

<p><b>▽</b> <b>▲</b> DME from GCN VOR/DME. Simultaneous reception of I-GCN and GCN DME required. DME required.</p>	<p>MISSED APPROACH: Climb to 7000 then climbing left turn to 9000 on heading 180° and on GCN VOR/DME R-204 direct CARMS/GCN 12 DME and hold.</p>
--	--

ATIS <b>124.3</b>	LOS ANGELES CENTER <b>124.85 319.2</b>	CANYON TOWER* <b>119.0 (CTAF) 0</b>	GND CON <b>121.9</b>	UNICOM <b>122.95</b>
----------------------	---	--	-------------------------	-------------------------



<p>One Minute Holding Pattern</p> <p>9000 ← 210° / 030° →</p> <p>GS 3.00° TCH 58</p>	CARMS GCN (12)	HAPLY GCN (6.2)	7000	9000	GCN R-204	CARMS GCN (12)
	<p>9000 ← 210° / 030° →</p> <p>8200</p> <p>5.8 NM</p>	<p>8200</p> <p>3.9 NM</p>	<p>7000</p> <p>1.2 NM</p>	<p>9000</p> <p>1.2 NM</p>	<p>GCN R-204</p>	<p>CARMS GCN (12)</p>
CATEGORY	A	B	C	D		
S-ILS 3	6795-¾		239 (200-¾)			
S-LOC 3	6960-1	404 (400-1)	6960-1½		404 (400-1½)	
<b>C</b> CIRCLING	7140-1 531 (600-1)	7200-1 591 (600-1)	7280-2 671 (700-2)	7620-3 1011 (1100-3)		



SW-4, 02 DEC 2021 to 30 DEC 2021

SW-4, 02 DEC 2021 to 30 DEC 2021