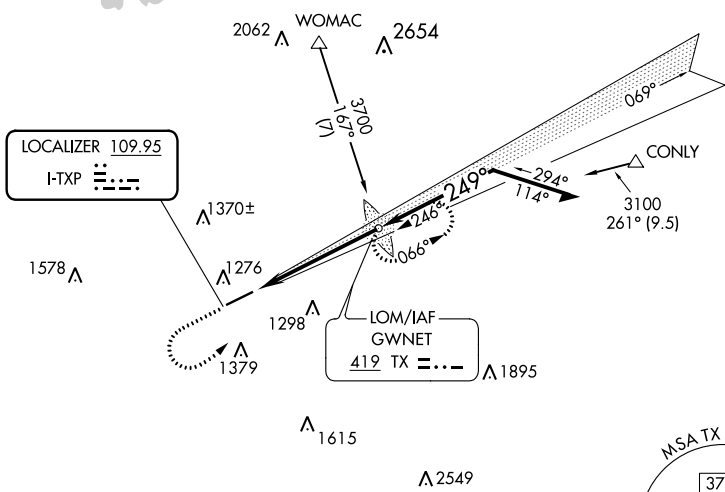


LOC I-TXP 109.95	APP CRS 249°	Rwy Idg TDZE Apt Elev	6001 1038 1062
----------------------------	------------------------	-----------------------------	---

ILS or LOC RWY 25
GWINNETT COUNTY/BRISCOE FLD (LZU)

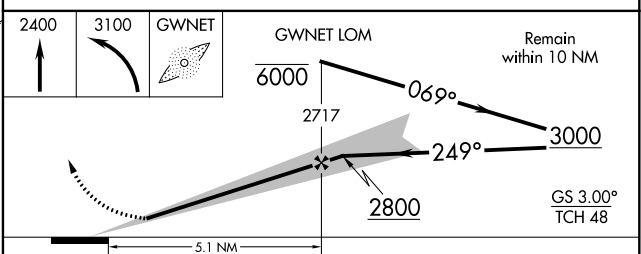
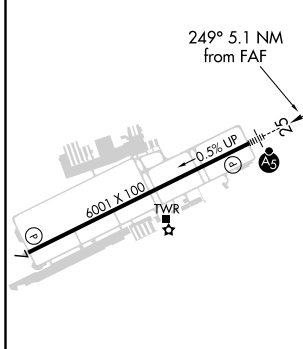
ADF or RADAR required.					MALSR 		MISSED APPROACH: Climb to 2400 then climbing left turn to 3100 direct GWNET LOM and hold.	
For inop ALS, increase S-LOC 25 Cat C/D visibility to 1 3/8 SM.								
ATIS 132.275	ATLANTA APP CON 126.975 239.275	GWINNETT TOWER * 124.1 (CTAF)	GND CON 121.8	CLNC DEL 121.8	CLNC DEL 134.0 (When twr closed)	UNICOM 123.05		



SE-4, 02 DEC 2021 to 30 DEC 2021

SE-4, 02 DEC 2021 to 30 DEC 2021

ELEV 1062	TDZE 1038
-----------	-----------



HIRL Rwy 7-25	FAF to MAP 5.1 NM					
	Knots	60	90	120	150	180
	Min:Sec	5:06	3:24	2:33	2:02	1:42
<input checked="" type="checkbox"/> CIRCLING	CATEGORY	A	B	C	D	
	S-ILS 25		1238-1/2	200 (200-1/2)		
	S-LOC 25	1500-1/2	462 (500-1/2)	1500-1	462 (500-1)	
		1640-1	578 (600-1)	1680-1 3/4 618 (700-1 3/4)	1700-2 638 (700-2)	