

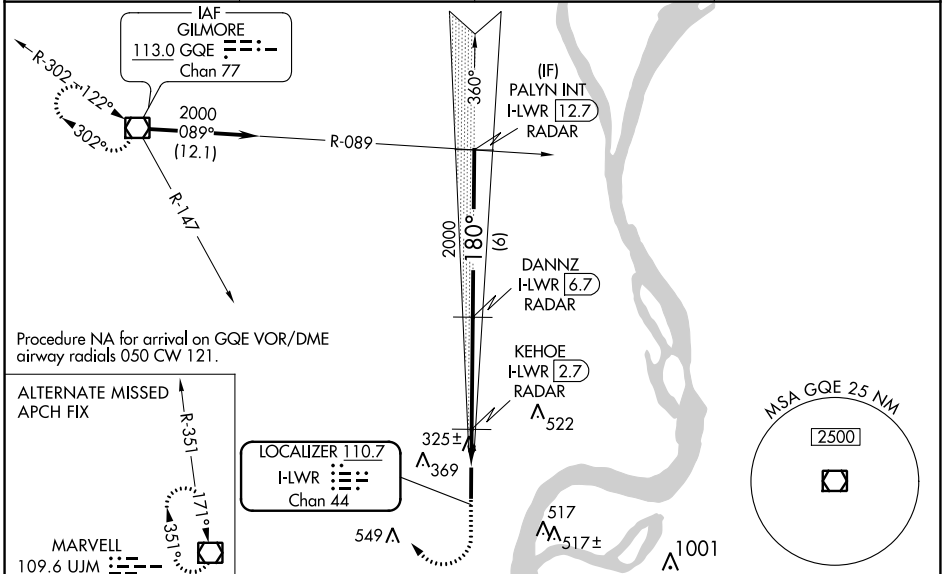
LOC/DME I-LWR <b>110.7</b> Chan <b>44</b>	APP CRS <b>180°</b>	Rwy Idg <b>6003</b> TDZE <b>213</b> Apt Elev <b>213</b>
---	------------------------	---

# ILS or LOC RWY 17

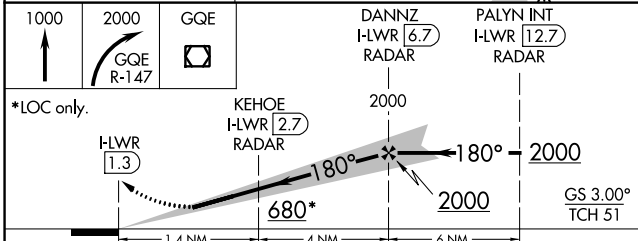
WEST MEMPHIS MUNI (A W M)

DME or RADAR required.	MALSR	MISSED APPROACH: Climb to 1000 then climbing right turn to 2000 on GQE VOR/DME R-147 to GQE VOR/DME and hold.
<p><b>NA</b> For inop ALS, increase S-LOC 17 Cat C/D visibility to 1 3/8 SM and KEHOE FIX MINIMUMS S-LOC 17 Cats C/D visibility to 1 SM.</p>		

ASOS <b>118.175</b>	MEMPHIS APP CON <b>119.1 291.6</b>	CLNC DEL <b>121.7</b>	UNICOM <b>123.05</b> (CTAF) <b>1</b>
------------------------	---------------------------------------	--------------------------	---



ELEV 213	TDZE 213
----------	----------



1000	2000	GQE
↑	GQE R-147	
*LOC only.	KEHOE I-LWR 2.7 RADAR	2000
DANNZ I-LWR 6.7 RADAR	PALYN INT I-LWR 12.7 RADAR	
180° 5.5 NM from FAF		
6003 X 1000	35	
MIRL Rwy 17-35 <b>1</b>	REIL Rwy 35 <b>1</b>	
FAF to MAP 5.5 NM		
Knots	60	90 120 150 180
Min:Sec	5:30	3:40 2:45 2:12 1:50

CATEGORY	A	B	C	D
S-ILS 17	413-1/2 200 (200-1/2)			
S-LOC 17	680-1/2	467 (500-1/2)	680-1	467 (500-1)
CIRCLING	680-1	467 (500-1)	680-1 1/2	780-2
KEHOE FIX MINIMUMS				
S-LOC 17	580-1/2	367 (400-1/2)	580-5/8	367 (400-5/8)
CIRCLING	640-1	680-1	680-1 1/2	780-2
	427 (500-1)	467 (500-1)	467 (500-1 1/2)	567 (600-2)

SC-1, 02 DEC 2021 to 30 DEC 2021

SC-1, 02 DEC 2021 to 30 DEC 2021