


LOM PH <b>332</b>	APP CRS <b>043°</b>	Rwy Idg <b>5104</b>
		TDZE <b>647</b>
		Apt Elev <b>650</b>

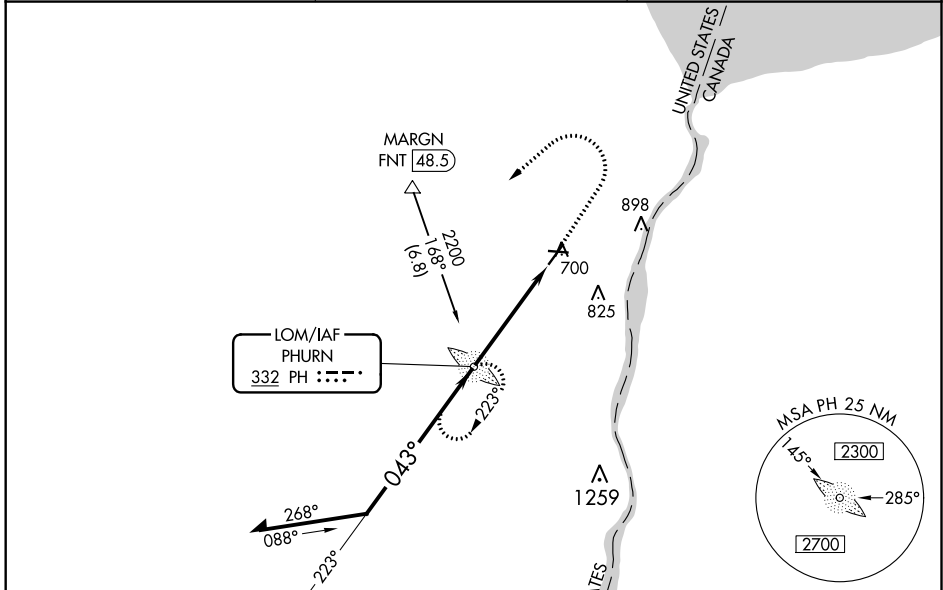
# NDB RWY 4

ST CLAIR COUNTY INTL (PHN)

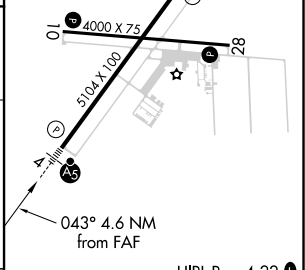
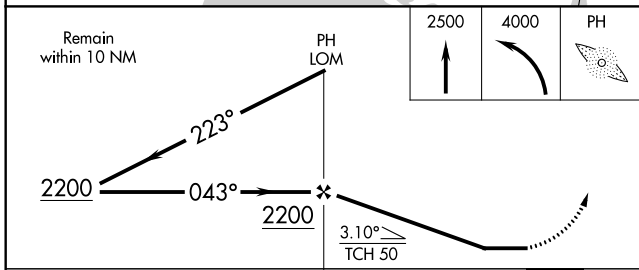
**▼** When local altimeter setting not received, use Troy altimeter setting and increase all MDA 100 feet, increase S-4 and Circling Cats C and D visibility ¼. For inoperative MALSR, increase S-4 Cats C and D visibility to 1¾ mile. For inoperative MALSR when using Troy altimeter setting, increase S-4 Cat D visibility to 1¾ mile. Night landing: Rwy 10, 22, 28 NA.

**▲ NA** MALSR  MISSED APPROACH: Climb to 2500 then climbing left turn to 4000 direct PHURN LOM and hold.

AWOS-3 <b>118,375</b>	SELFRIDGE APP CON * <b>119.6 391.9</b>	UNICOM <b>123.05 (CTAF) 0</b>
--------------------------	---	----------------------------------



ELEV 650	TDZE 647
----------	----------



CATEGORY	A	B	C	D
S-4	1160-¾ 513 (600-¾)		1160-1 513 (600-1)	
<b>C</b> CIRCLING	1160-1 510 (600-1)		1260-1¾ 610 (700-1¾)	1260-2 610 (700-2)

FAF to MAP 4.6 NM					
Knots	60	90	120	150	180
Min:Sec	4:36	3:04	2:18	1:50	1:32

EC-1, 02 DEC 2021 to 30 DEC 2021

EC-1, 02 DEC 2021 to 30 DEC 2021