

WAAS CH 63217 W32A	APP CRS 315°	Rwy Idg 4800 TDZE 356 Apt Elev 358
--	------------------------	---

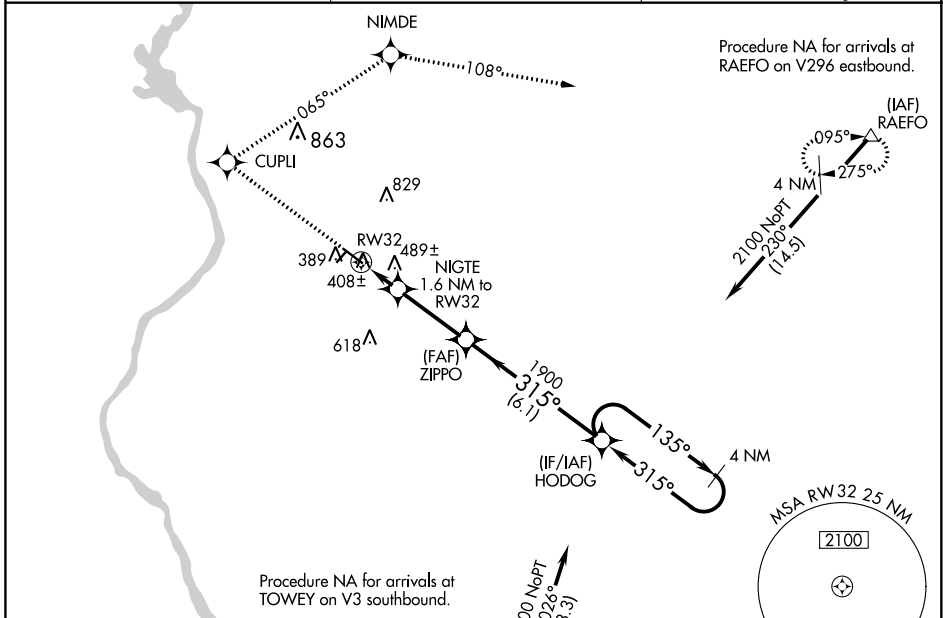
RNAV (GPS) RWY 32

RICHMOND COUNTY (R/CZ)

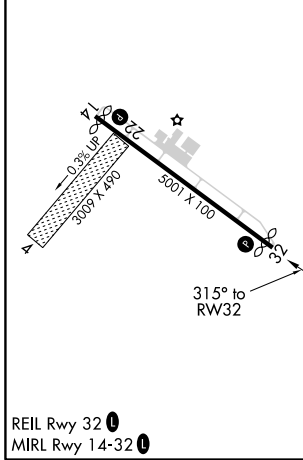
⚠ Baro-VNAV and VDP NA when using MacKall AAF altimeter setting. For uncompensated Baro-VNAV systems, LNAV/VNAV NA below -15°C (5°F) or above 48°C (118°F). DME/DME RNP-0.3 NA. Rwy 32 helicopter visibility reduction below 3/4 SM NA. When local altimeter setting not received, use MacKall AAF altimeter setting and increase all DA 39 feet and all MDA 40 feet and increase LNAV Cat C visibility 3/8 SM. Circling Rwy 14 NA at night. Circling NA to Rwys 4 and 22.

MISSED APPROACH: Climb to 2400 direct CUPLI and right turn on track 065° to NIMDE and on track 108° to RAEFO and hold.

AWOS-3 118.775	FAYETTEVILLE APP CON 127.8 343.725	UNICOM 122.8 (CTAF) ①
--------------------------	--	---------------------------------



ELEV 358	TDZE 356
----------	----------



2400	CUPLI	NIMDE	RAEFO	VGSI and RNAV glidepath not coincident (VGSI Angle 3.15/TCH 25).	
↑	☀	↪ tr 065°	☀	↪ tr 108°	△
*LNAV only.		NIGTE 1.6 NM to RWY 32	ZIPPO 1900	HODOG 4 NM Holding Pattern	
↪ RWY 32		*1.1 NM to RWY 32	↪ 315°	↪ 135°	↪ 2100
↪ 900*		↪ 1900	↪ 315°		
↪ 1.1 NM		↪ 0.5 NM	↪ 3 NM	↪ 6.1 NM	
CATEGORY	A	B	C	D	
LPV DA	633-1		277 (300-1)		
LNAV/VNAV DA	794-1½		438 (500-1½)		
LNAV MDA	740-1	384 (400-1)	740-1¼ 384 (400-1¼)	740-1¼ 384 (400-1¼)	
CIRCLING	800-1 442 (500-1)	820-1 462 (500-1)	960-1¾ 602 (700-1¾)	960-2 602 (700-2)	

SE-2, 02 DEC 2021 to 30 DEC 2021

SE-2, 02 DEC 2021 to 30 DEC 2021