


LOC/DME I-JLS 110.3	APP CRS 051°	Rwy Idg 5002
		TDZE 193
		Apt Elev 193

LOC RWY 5

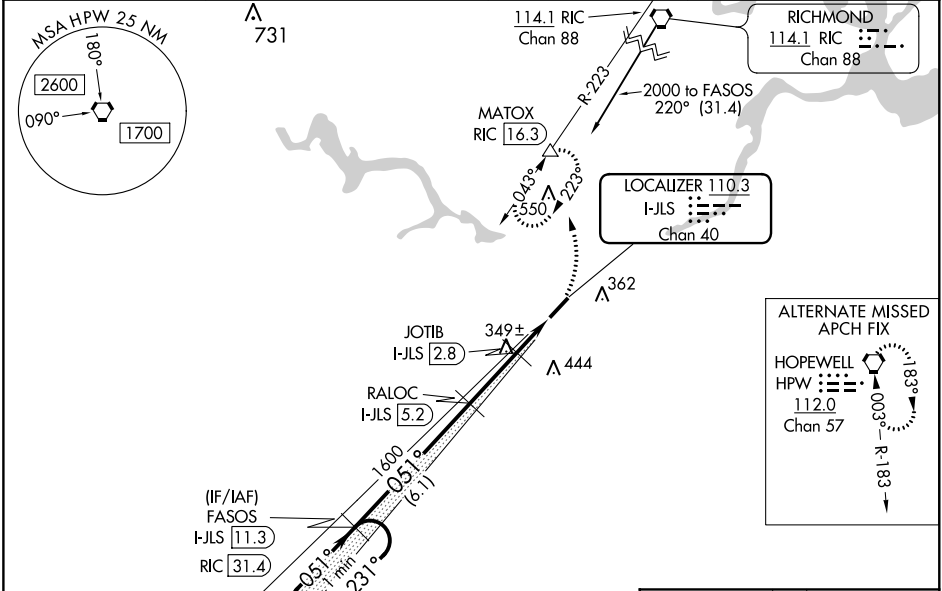
DINWIDDIE COUNTY (PTB)

⚠ **⚠** DME required. Helicopter visibility reduction below $\frac{3}{4}$ SM NA. VDP NA when using Richmond Exec/Chesterfield County altimeter setting. When local altimeter setting not received, use Richmond Exec/Chesterfield County altimeter setting and increase all MDA 40 feet; increase S-LOC 5 Cat C visibility $\frac{1}{8}$ mile and Circling Cat C visibility $\frac{1}{4}$ mile. For inop ODALS, increase S-LOC 5 Cat C visibility to $\frac{1}{2}$ mile. Inop table does not apply to S-LOC 5 Cat A and B. Inop table does not apply to S-LOC Cat A and B when using Richmond Exec/Chesterfield County altimeter setting.

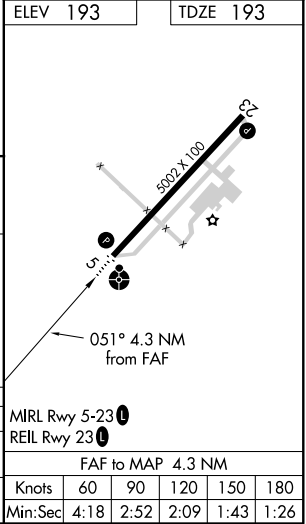
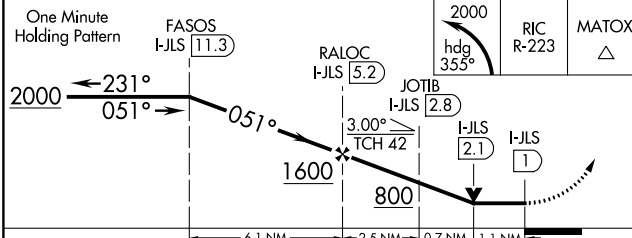
ODALS  ...

MISSED APPROACH:
Climbing left turn to 2000 on heading 355° and on RIC VORTAC R-223 to MATOX/RIC 16.3 DME and hold.

AWOS-3 133.325	POTOMAC APP CON 126.75 307.2	GCO 135.075	UNICOM 122.7 (CTAF) 0
--------------------------	----------------------------------------	-----------------------	---------------------------------



DME REQUIRED



CATEGORY	A	B	C	D
S-5	600-1	407 (500-1)		NA
C CIRCLING	680-1	487 (500-1)	760-1½ 567 (600-1½)	NA

NE-3, 02 DEC 2021 to 30 DEC 2021

NE-3, 02 DEC 2021 to 30 DEC 2021