

WAAS CH <b>70705</b> <b>W05A</b>	APP CRS <b>051°</b>	Rwy Idg TDZE Apt Elev	<b>5002</b> <b>193</b> <b>193</b>
--	------------------------	-----------------------------	---

# RNAV (GPS) RWY 5

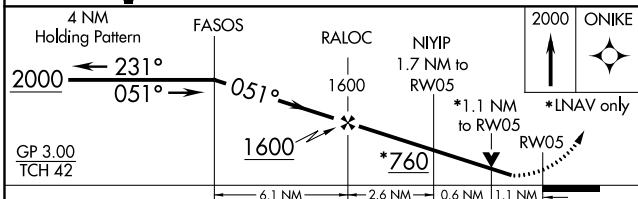
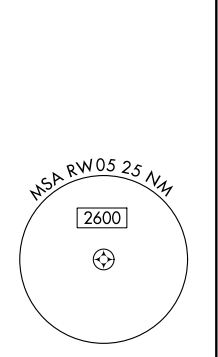
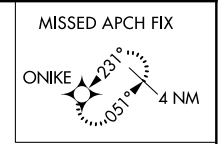
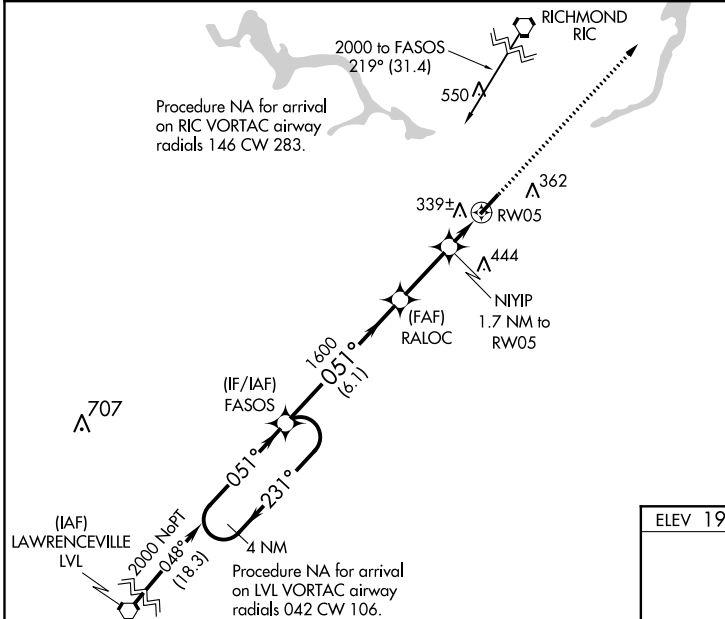
DINWIDDIE COUNTY (PTB)

**⚠** Inop table does not apply to LPV all Cats, LNAV/VNAV all Cats and LNAV Cat A and B. For uncompensated Baro-VNAV systems, LNAV/VNAV NA below -15°C (5°F) or above 54°C (130°F). Baro-VNAV and VDP NA when using Richmond Exec/Chesterfield County altimeter setting. DME/DME RNP-0.3 NA. Helicopter visibility reduction below ¼ SM NA. When local altimeter setting not received, use Richmond Exec/Chesterfield County altimeter setting; increase LPV DA to 534 feet and LNAV/VNAV DA to 546 feet and all MDA 40 feet; increase LNAV Cat C visibility ½ mile and increase Circling Cat C visibility ¼ mile. For inop ODALS when using Richmond Exec/Chesterfield County altimeter setting, increase LPV all Cats visibility and LNAV/VNAV all Cats visibility to 1½ mile. Inop table does not apply to LNAV Cat A and B when using Richmond Exec/Chesterfield County altimeter setting. For inop ODALS, increase LNAV Cat C visibility to 1½ mile.

ODALS

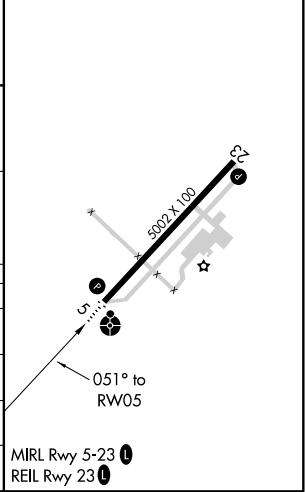
MISSED APPROACH:  
Climb to 2000 direct  
ONIKE and hold.

AWOS-3 <b>133.325</b>	POTOMAC APP CON <b>126.75 307.2</b>	GCO <b>135.075</b>	UNICOM <b>122.7 (CTAF)</b>
--------------------------	--	-----------------------	-------------------------------



ELEV 193	TDZE 193
----------	----------

CATEGORY	A	B	C	D
LPV DA	497-1	304 (400-1)		NA
LNAV/VNAV DA	509-1	316 (400-1)		NA
LNAV MDA	600-1	407 (500-1)		NA
<b>C</b> CIRCLING	680-1	487 (500-1)	760-1½ 567 (600-1½)	NA



NE-3, 02 DEC 2021 to 30 DEC 2021

NE-3, 02 DEC 2021 to 30 DEC 2021