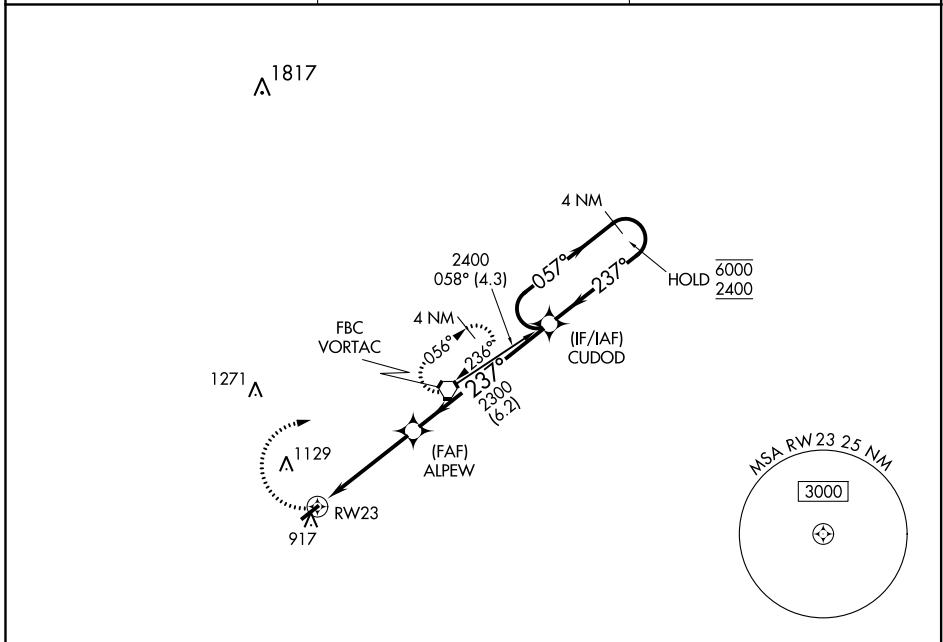


| | | |
|------------------------|-----------------------------|---|
| APP CRS 237° | Rwy Idg TDZE Apt Elev | 4126 850 851 |
|------------------------|-----------------------------|---|

RNAV (GPS) RWY 23

BLUFFTON (5G7)

| | | |
|--|--|---------------------------------|
| RNP APCH. | MISSED APPROACH: Climbing right turn to 2500 direct FBC VORTAC and hold. | |
| ▼ ▲ NA Use Findlay altimeter setting; when not received use Lima altimeter setting and increase all MDA 20 feet and Circling Cat D visibility ¼ SM. | | |
| FDY ASOS 132.85 | TOLEDO APP CON 120.8 317.55 | UNICOM 122.8 (CTAF) 0 |



EC-2, 02 DEC 2021 to 30 DEC 2021

EC-2, 02 DEC 2021 to 30 DEC 2021

| | |
|----------|----------|
| ELEV 851 | TDZE 850 |
|----------|----------|

This section provides a detailed view of the holding pattern and final approach. The holding pattern is a 4 NM circle with 057° outbound and 237° inbound legs. The final approach segment is 6.2 NM long, starting from the CUDOD and ending at RWY 23. A 3.03° TCH of 43 is indicated. A 237° turn leads to RWY 23. The chart also shows the MSA RW 23 25 NM (3000) and the RWY 23 (917) location.

| | | | | |
|----------|-----------------------|-----------------------|--|--|
| CATEGORY | A | B | C | D |
| LNVA MDA | 1340-1 | 490 (500-1) | 1340-1 $\frac{3}{8}$ 490 (500-1 $\frac{3}{8}$) | 1340-1 $\frac{1}{2}$ 490 (500-1 $\frac{1}{2}$) |
| CIRCLING | 1360-1 509 (600-1) | 1520-1 669 (700-1) | 1520-1 $\frac{3}{4}$ 669 (700-1 $\frac{3}{4}$) | 1520-2 669 (700-2) |

REIL Rwy 5
REIL Rwy 23 0
MIRL Rwy 5-23 0