

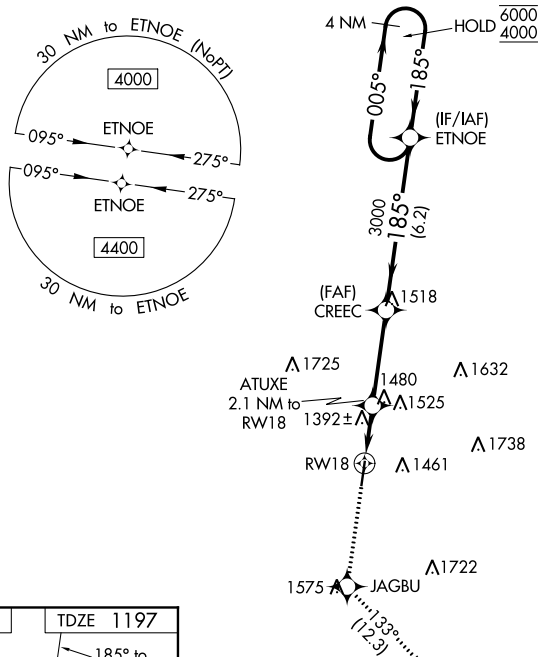
WAAS CH 78415 W18A	APP CRS 185°	Rwy Idg TDZE 1197 Apt Elev 1197
--	------------------------	---

RNAV (GPS) RWY 18

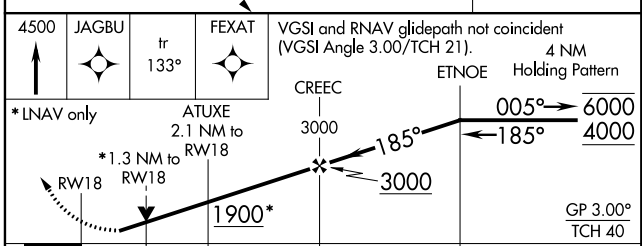
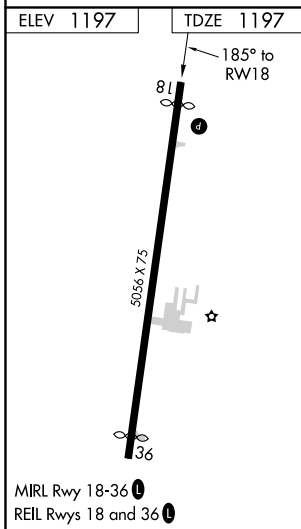
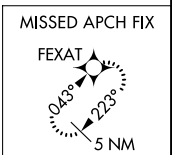
LE MARS MUNI (LRJ)

RNP APCH.	MISSED APPROACH: Climb to 4500 direct JAGBU and on track 133° to FEXAT and hold.
<p>▼ Rwy 18 helicopter visibility reduction below 3/4 SM NA.</p> <p>▲ For uncompensated Baro-VNAV systems, LNAV/VNAV NA below -17°C or above 54°C.</p> <p>☁ -24°C</p>	

AWOS-3P 120.975	SIOUX CITY APP CON * 124.6 307.0	UNICOM 122.8 (CTAF) 0
---------------------------	--	---------------------------------



1976 A



CATEGORY	A	B	C	D
LPV DA	1479-1 282 (300-1)			NA
LNAV/VNAV DA	1691-1 3/8 494 (500-1 3/8)			NA
LNAV MDA	1660-1	463 (500-1)	1660-1 3/8 463 (500-1 3/8)	NA
CIRCLING	1760-1 563 (600-1)	1780-1 583 (600-1)	1840-1 3/4 643 (700-1 3/4)	NA

NC-3, 02 DEC 2021 to 30 DEC 2021

NC-3, 02 DEC 2021 to 30 DEC 2021