

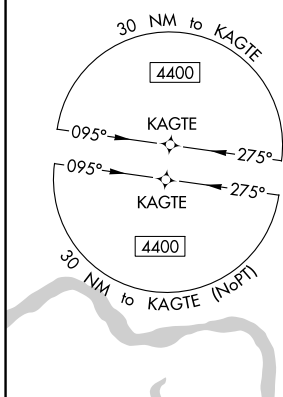
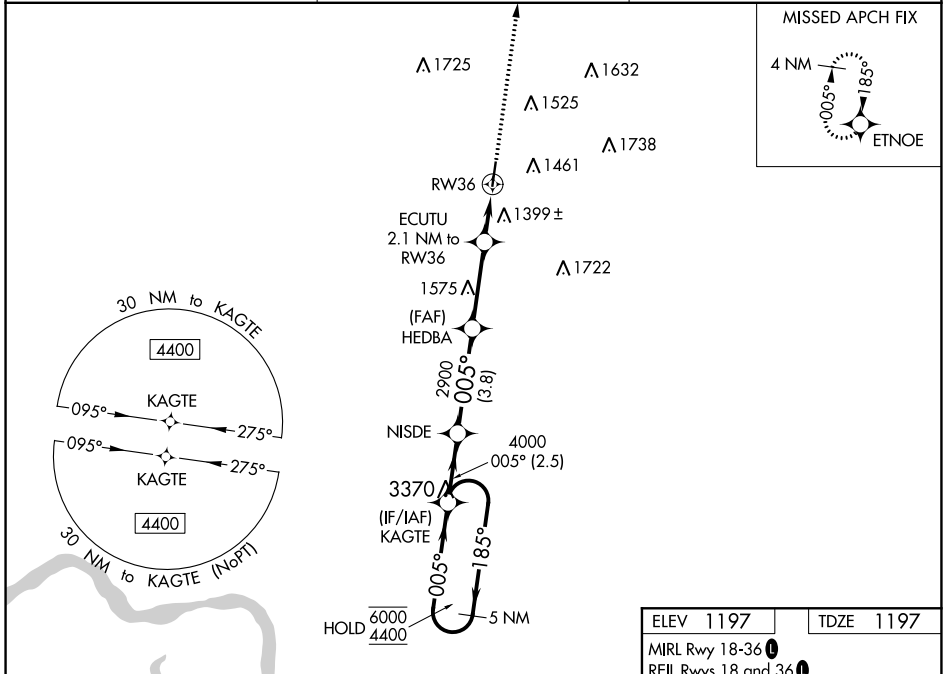
WAAS CH <b>42516</b> <b>W36A</b>	APP CRS <b>005°</b>	Rwy ldg <b>4755</b> TDZE <b>1197</b> Apt Elev <b>1197</b>
--	------------------------	---

# RNAV (GPS) RWY 36

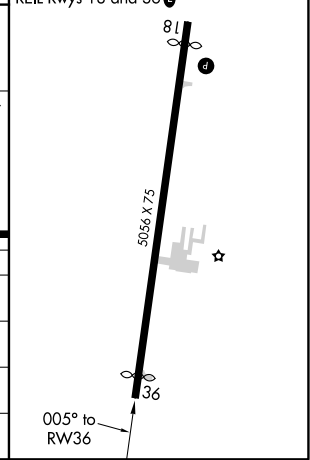
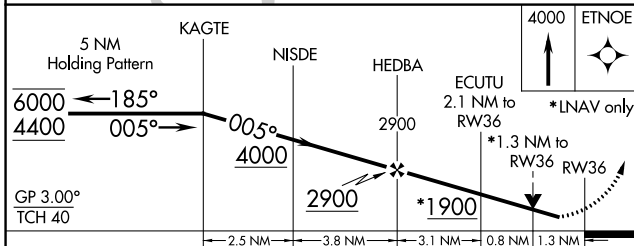
LE MARS MUNI (L.R.J)

RNP APCH.	MISSED APPROACH: Climb to 4000 direct ETN0E and hold.
<p>Rwy 36 helicopter visibility reduction below 3/4 SM NA. For uncompensated Baro-VNAV systems, LNAV/VNAV NA below -24°C -17°C or above 54°C.</p>	

AWOS-3P <b>120.975</b>	SIOUX CITY APP CON * <b>124.6 307.0</b>	UNICOM <b>122.8 (CTAF) 0</b>
---------------------------	--	---------------------------------



ELEV 1197	TDZE 1197
MIRL Rwy 18-36	REIL Rwys 18 and 36



CATEGORY	A	B	C	D
LPV DA	1469-1 272 (300-1)			NA
LNAV/VNAV DA	1723-1 526 (600-1 7/8)			NA
LNAV MDA	1660-1 463 (500-1)		1660-1 463 (500-1 3/8)	NA
CIRCLING	1760-1 563 (600-1)	1780-1 583 (600-1)	1840-1 643 (700-1 3/4)	NA

NC-3, 02 DEC 2021 to 30 DEC 2021

NC-3, 02 DEC 2021 to 30 DEC 2021