

WAAS CH <b>48923</b> <b>W14A</b>	APP CRS <b>143°</b>	Rwy Idg <b>5001</b> TDZE <b>22</b> Apt Elev <b>22</b>
----------------------------------------	------------------------	-------------------------------------------------------------

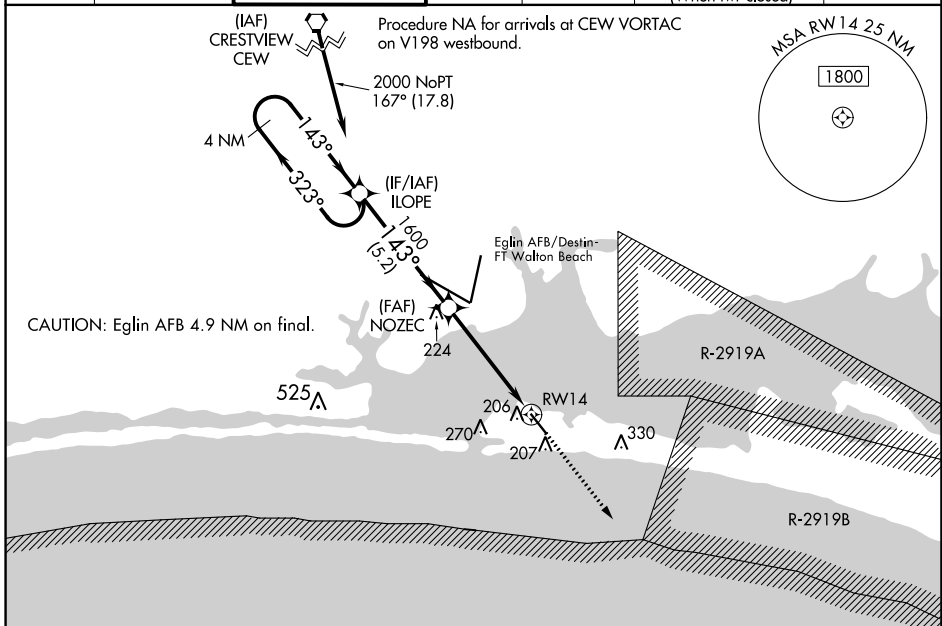
# RNAV (GPS) RWY 14

DESTIN EXEC (DTS)

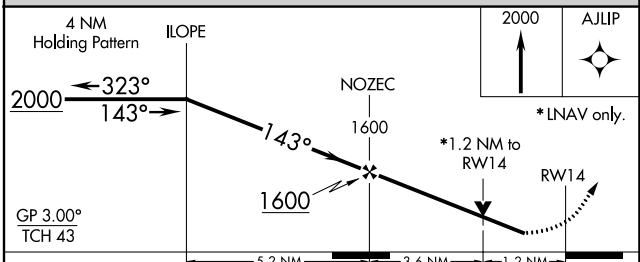
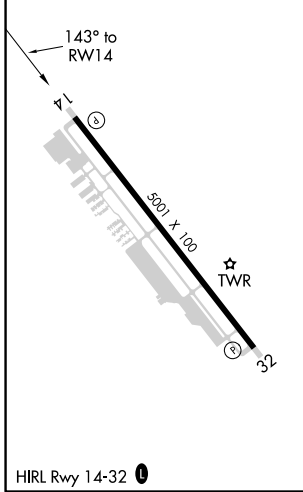
**⚠** For uncompensated Baro-VNAV systems, LNAV/VNAV NA below 0°C (32°F) or above 54°C (130°F).  
**⚠** Baro-VNAV and VDP NA when using Crestview altimeter setting. Rwy 14 helicopter visibility reduction below ¼ SM NA. DME/DME RNP-0.3 NA. When local altimeter setting not received, use Crestview altimeter setting and increase all DA/MDA 80 feet; increase LPV all Cats visibility ½ SM, LNAV/VNAV all Cats visibility ⅓ SM, increase LNAV Cats C and D ½ SM, and Circling Cats C and D ¼ SM.

**MISSED APPROACH:**  
 Climb to 2000 direct  
 AJLUP and hold.

ATIS <b>133.925</b>	EGLIN APP CON <b>132.1 360.6</b>	DESTIN TOWER ★ <b>118.45</b> (CTAF) <b>0</b>	GND CON <b>121.6</b>	CLNC DEL <b>121.6</b>	CLNC DEL <b>127.7 377.2</b> (When twr closed)	UNICOM <b>123.075</b>
------------------------	-------------------------------------	-------------------------------------------------	-------------------------	--------------------------	-----------------------------------------------------	--------------------------



ELEV <b>22</b>	TDZE <b>22</b>
----------------	----------------



CATEGORY	A	B	C	D
LPV DA	272-1 250 (300-1)			
LNAV/VNAV DA	367-1½ 345 (400-1½)			
LNAV MDA	460-1	438 (500-1)	460-1¼	438 (500-1¼)
CIRCLING	580-1	558 (600-1)	680-1¾ 658 (700-1¾)	680-2 658 (700-2)

SE-3, 02 DEC 2021 to 30 DEC 2021

SE-3, 02 DEC 2021 to 30 DEC 2021