

| | | | |
|--|------------------------|-----------------------------|---|
| WAAS CH 40431 W18A | APP CRS 181° | Rwy Idg TDZE Apt Elev | 4306 1737 1737 |
|--|------------------------|-----------------------------|---|

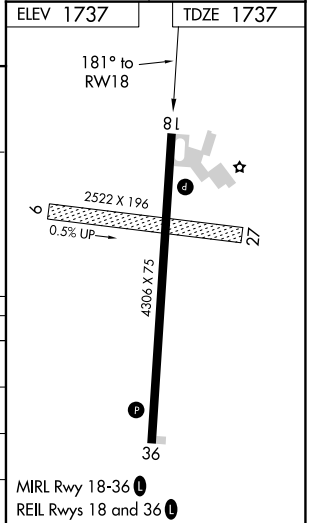
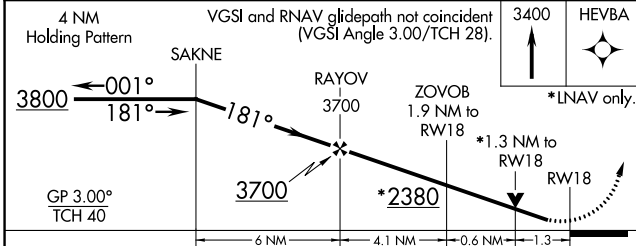
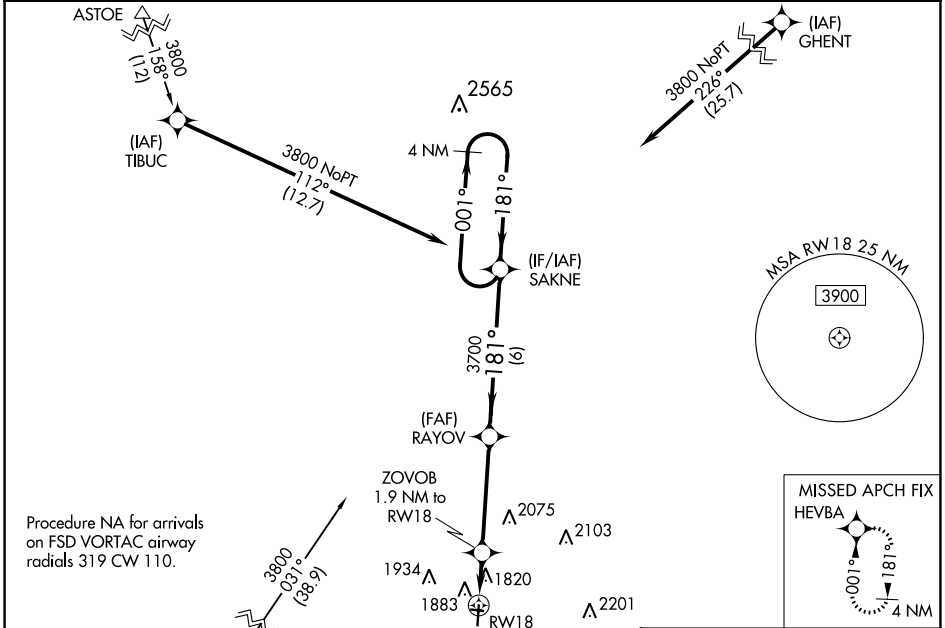
RNAV (GPS) RWY 18

PIPESTONE MUNI (PQN)

⚠ For uncompensated Baro-VNAV systems, LNAV/VNAV NA below -18°C (0°F) or above 54°C (130°F). DME/DME RNP -0.3 NA. When local altimeter setting not received, use Slayton altimeter setting and increase all DA 68 feet and all MDA 80 feet; increase LPV all Cats, LNAV/VNAV all Cats, and Circling Cat C visibility ¼ mile; increase LNAV Cat C visibility ½ mile. Helicopter visibility reduction below ¾ SM NA. Baro-VNAV and VDP NA with Slayton altimeter setting. Circling NA to Rwy's 9 and 27.

MISSED APPROACH:
Climb to 3400 direct HEVBA and hold.

| | | | |
|--------------------------|---|-----------------------|---------------------------------|
| AWOS-3 118.375 | MINNEAPOLIS CENTER 132.05 317.4 | GCO 121.725 | UNICOM 122.8 (CTAF) 0 |
|--------------------------|---|-----------------------|---------------------------------|



| CATEGORY | A | B | C | D |
|--------------|--------|-------------|-------------------------------|----|
| LPV DA | 1987-1 | 250 (300-1) | | NA |
| LNAV/VNAV DA | 2034-1 | 297 (300-1) | | NA |
| LNAV MDA | 2180-1 | 443 (500-1) | 2180-1 3/8 443 (500-1 3/8) | NA |
| CIRCLING | 2200-1 | 463 (500-1) | 2280-1 1/2 543 (600-1 1/2) | NA |

NC-1, 02 DEC 2021 to 30 DEC 2021

NC-1, 02 DEC 2021 to 30 DEC 2021