

WAAS CH 69332 W36A	APP CRS 001°	Rwy Idg TDZE 1734 Apt Elev 1737
--	------------------------	---

RNAV (GPS) RWY 36

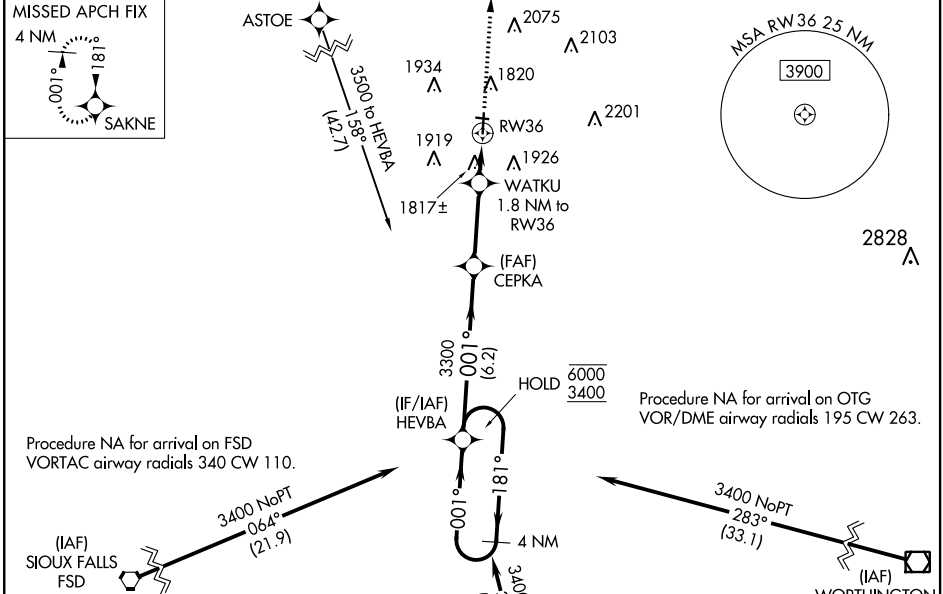
PIPESTONE MUNI (PQN)

RNP APCH.

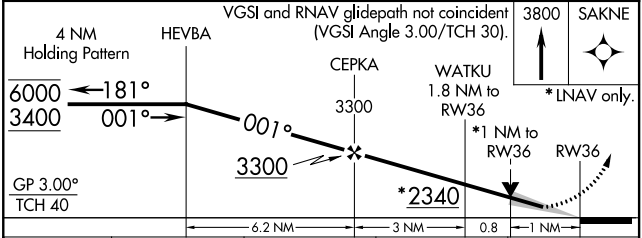
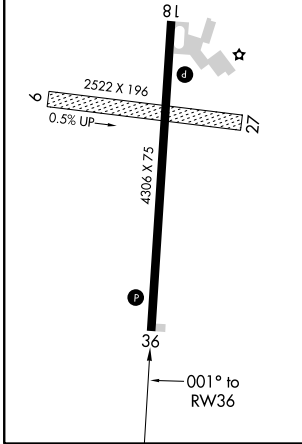
▼ Circling NA to Rwy's 9 and 27. For uncompensated Baro-VNAV systems, LNAV-VNAV NA below -18°C or above 54°C.

▲ MISSED APPROACH: Climb to 3800 direct SAKNE and hold.

AWOS-3 118.375	MINNEAPOLIS CENTER 132.05 317.4	GCO 121.725	UNICOM 122.8 (CTAF) 0
--------------------------	---	-----------------------	---------------------------------



ELEV 1737	TDZE 1734
MIRL Rwy 18-36 1	
REIL Rwy 18 and 36 1	



CATEGORY	A	B	C	D
LPV DA	1934-1	200 (200-1)		NA
LNAV/VNAV DA	1984-1	250 (300-1)		NA
LNAV MDA	2080-1	346 (400-1)		NA
CIRCLING	2200-1	463 (500-1)	2280-1½ 543 (600-1½)	NA

NC-1, 02 DEC 2021 to 30 DEC 2021

NC-1, 02 DEC 2021 to 30 DEC 2021