

WAAS CH 45828 W15A	APP CRS 150°	Rwy Idg TDZE Apt Elev	4199 1419 1419
--	------------------------	-----------------------------	---

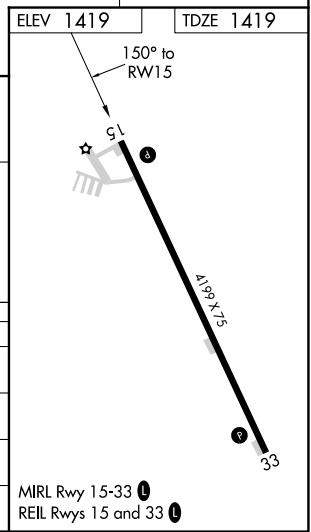
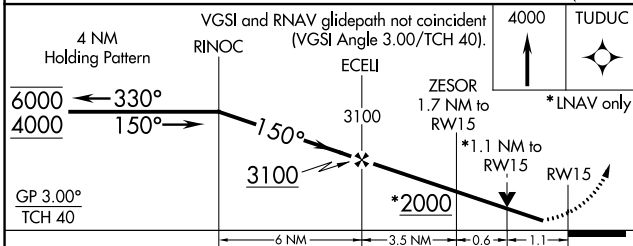
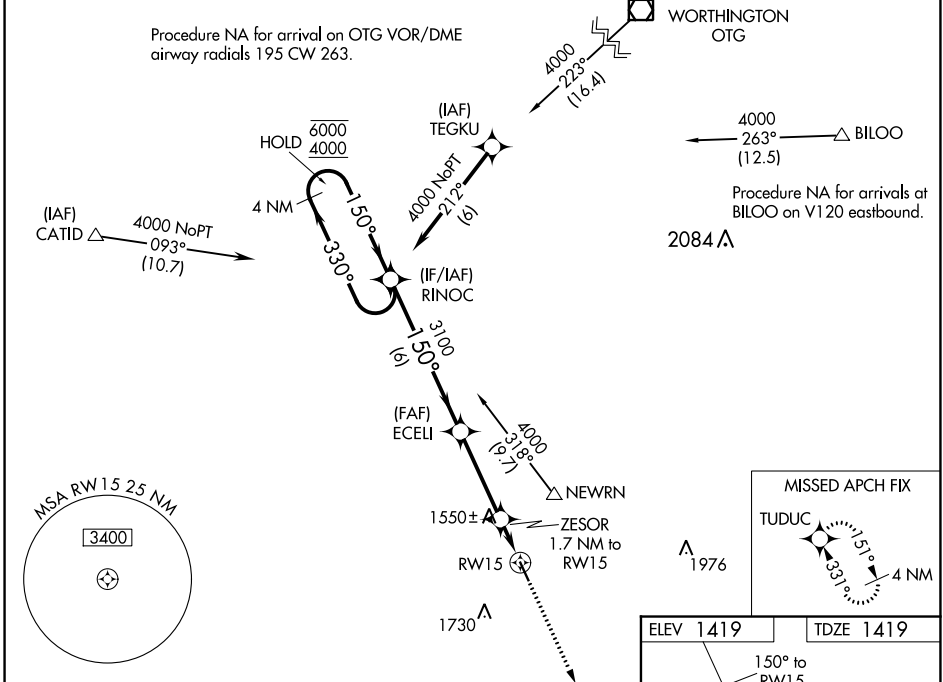
RNAV (GPS) RWY 15

SHELDON RGNL (SHL)

RNP APCH:
 ▼ Rwy 15 helicopter visibility reduction below 3/4 SM NA.
 ▲ For uncompensated Baro-VNAV systems, LNAV/VNAV NA below -17°C or above 130°C.

MISSED APPROACH: Climb to 4000 direct TUDUC and hold.

AWOS-3 119.775	MINNEAPOLIS CENTER 125.025 235.625	UNICOM 122.8 (CTAF)
--------------------------	--	-------------------------------



CATEGORY	A	B	C	D
LPV DA	1669-1 250 (300-1)			NA
LNAV/VNAV DA	1669-1 250 (300-1)			NA
LNAV MDA	1800-1 381 (400-1)		1800-1½ 381 (400-1½)	NA
CIRCLING	1820-1 401 (500-1)	1880-1 461 (500-1)	1880-1½ 461 (500-1½)	NA

NC-3, 02 DEC 2021 to 30 DEC 2021

NC-3, 02 DEC 2021 to 30 DEC 2021