

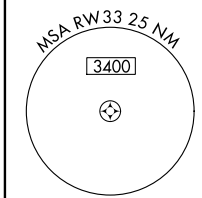
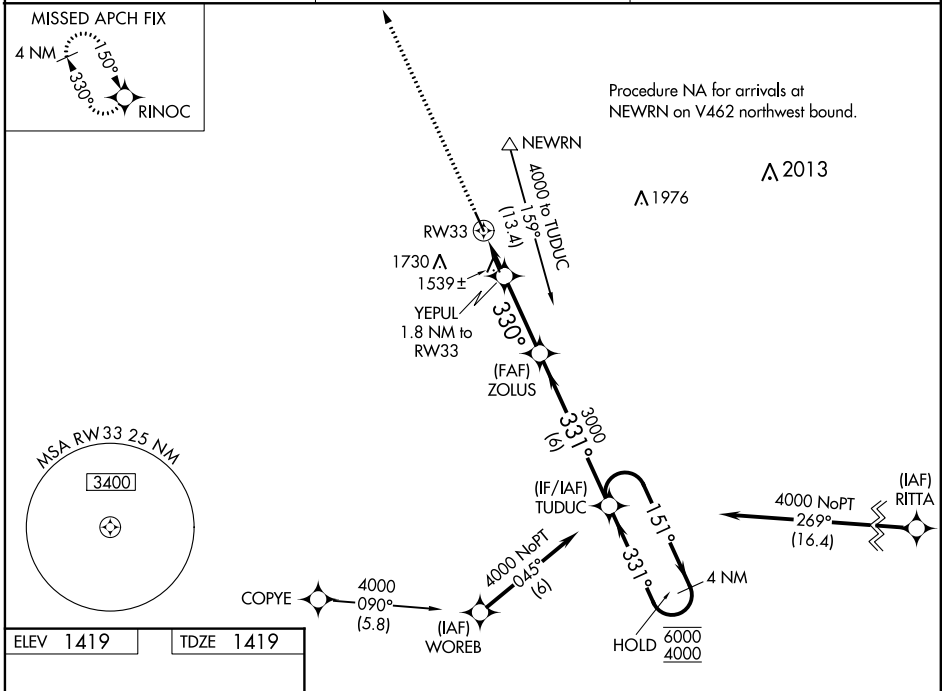
WAAS CH 82128 W33A	APP CRS 330°	Rwy Idg TDZE Apt Elev	4199 1419 1419
--	------------------------	-----------------------------	---

RNAV (GPS) RWY 33

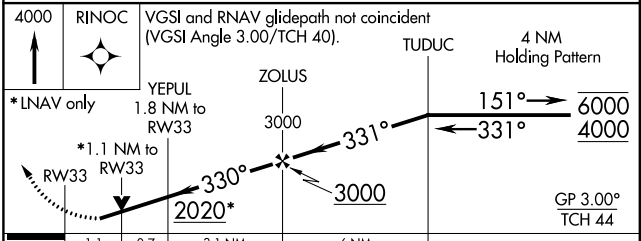
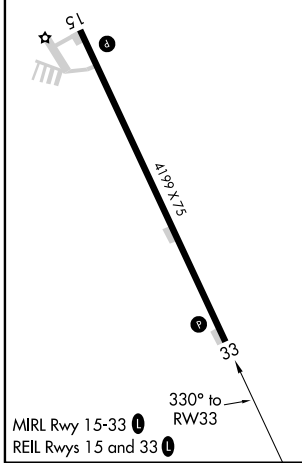
SHELDON RGNL (SHL)

RNP APCH-GPS.	MISSED APPROACH: Climb to 4000 direct RINOC and hold.
<p>▼ Rwy 33 helicopter visibility reduction below 3/4 SM NA. For uncompensated Baro-VNAV systems, LNAV/VNAV NA below -17°C or above 54°C.</p> <p>▲</p>	

AWOS-3 119.775	MINNEAPOLIS CENTER 125.025 235.625	UNICOM 122.8 (CTAF) 0
--------------------------	--	---------------------------------



ELEV 1419	TDZE 1419
-----------	-----------



CATEGORY	A	B	C	D
LPV DA	1718-1 299 (300-1)			NA
LNAV/VNAV DA	1696-1 277 (300-1)			NA
LNAV MDA	1800-1	381 (400-1)	1800-1 1/8 381 (400-1 1/8)	NA
CIRCLING	1820-1 401 (500-1)	1920-1 501 (600-1)	2080-1 3/4 661 (700-1 3/4)	NA

NC-3, 02 DEC 2021 to 30 DEC 2021

NC-3, 02 DEC 2021 to 30 DEC 2021