

WAAS CH <b>90436</b> <b>W08A</b>	APP CRS <b>077°</b>	Rwy Idg <b>5002</b> TDZE <b>17</b> Apt Elev <b>23</b>
--	------------------------	---

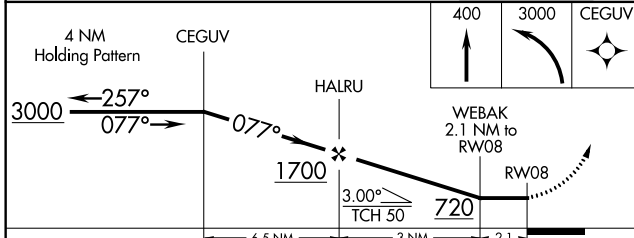
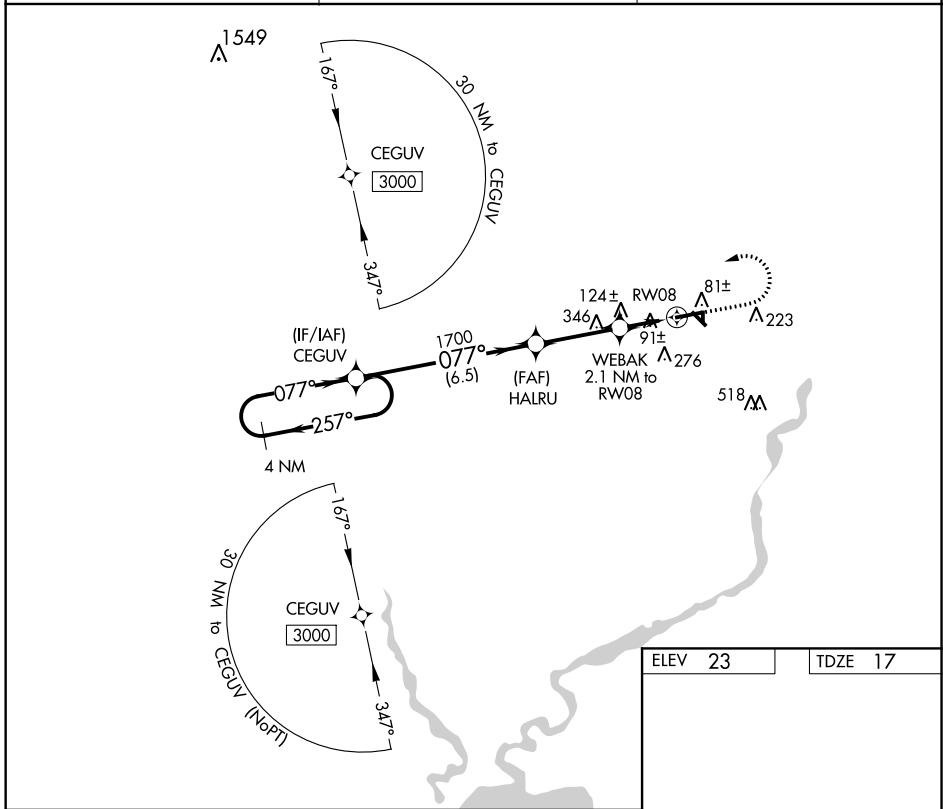
# RNAV (GPS) RWY 8

JENNINGS (3R7)

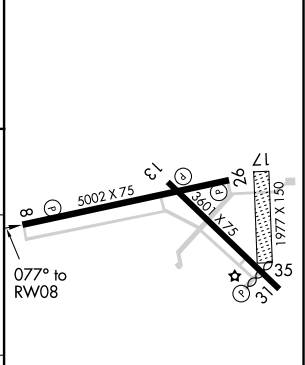
**▼** DME/DME RNP-0.3 NA. Night landing: Rwy 08, 31 NA. Helicopter visibility reduction below 1 SM NA. When local altimeter setting not received, use Lake Charles Rgnl altimeter setting: Increase all MDA 80 ft, LP Cat C visibility 1/4 mile, LNAV Cat C visibility 3/8 mile, and Circling Cat C visibility 1/4 mile.

**MISSED APPROACH:** Climb to 400 then climbing left turn to 3000 direct CEGUV and hold.

AWOS-3PT <b>121.150</b>	LAKE CHARLES APP CON* <b>119.8 282.3</b>	UNICOM <b>122.8 (CTAF) 0</b>
----------------------------	---	---------------------------------



ELEV 23	TDZE 17
---------	---------



CATEGORY	A	B	C	D
LP MDA		360-1 343 (400-1)		NA
LNAV MDA		380-1 363 (400-1)		NA
<b>CIRCLING</b>	580-1 557 (600-1)		680-1 3/4 657 (700-1 3/4)	NA

REIL Rwy 8, 26, 13, and 31  
MIRL Rwy 8-26 and 13-31 **0**

SC-4, 02 DEC 2021 to 30 DEC 2021

SC-4, 02 DEC 2021 to 30 DEC 2021