

LOC/DME I-TOI <b>108.9</b> Chan <b>26</b>	APP CRS <b>074°</b>	Rwy Idg TDZE Apt Elev <b>6197</b> <b>389</b> <b>397</b>
---	------------------------	--

# ILS or LOC RWY 7

TROY MUNI AT N KENNETH CAMPBELL FIELD (TOI)

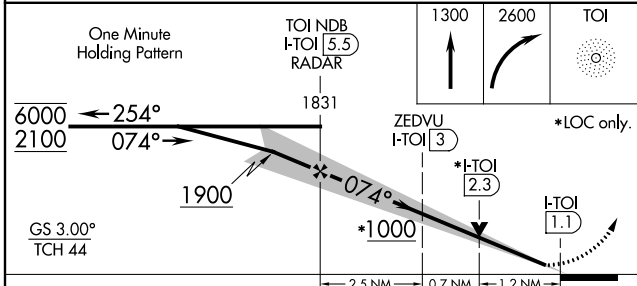
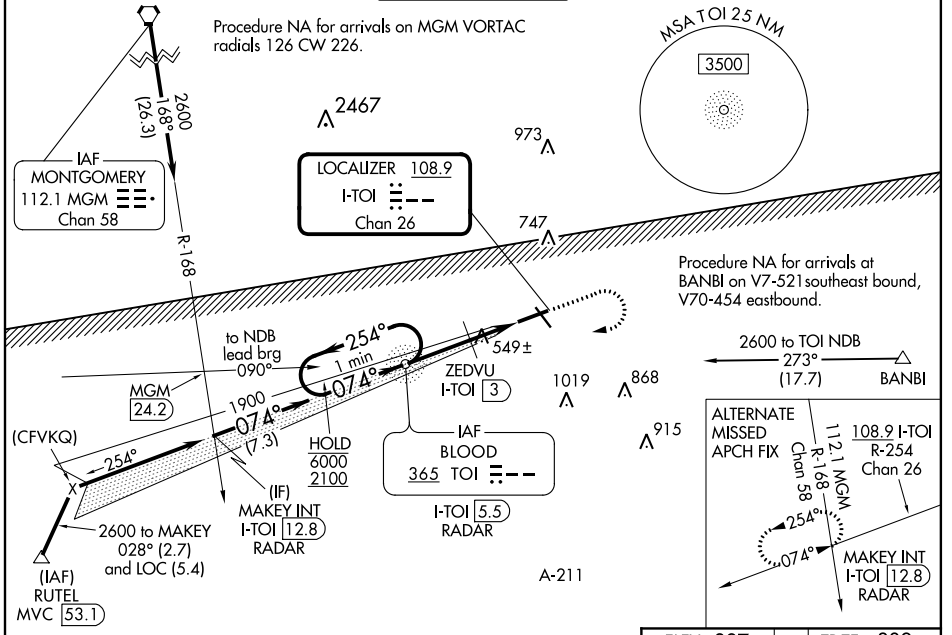
ADF required.

**▲** Circling Rwy 14, 32 NA at night.

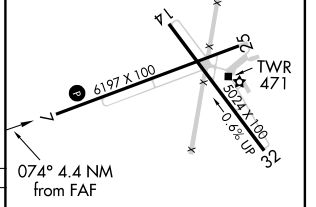
ASR/PAR

MISSED APPROACH: Climb to 1300 then climbing right turn to 2600 direct TOI NDB/I-TOI 5.5 DME/RADAR and hold.

ATIS <b>120.925</b>	CAIRNS APP CON ★ <b>121.1 319.25</b>	TROY TOWER ★ <b>124.3 (CTAF) 306.9</b>	GND CON <b>121.9 294.7</b>	UNICOM <b>122.8</b>
------------------------	---	---	-------------------------------	------------------------



ELEV <b>397</b>	TDZE <b>389</b>
-----------------	-----------------



CATEGORY	A	B	C	D
S-ILS 7		635-7/8	246 (300-7/8)	
S-LOC 7	1000-1	611 (700-1)	1000-1 3/4	611 (700-1 3/4)
<b>C</b> CIRCLING	1000-1	603 (700-1)	1300-2 3/4 903 (1000-2 3/4)	1380-3 983 (1000-3)
ZEDVU FIX MINIMUMS (DME REQUIRED)				
S-LOC 7	800-1	411 (500-1)	800-1 1/2	411 (500-1 1/2)
<b>C</b> CIRCLING	1000-1	603 (700-1)	1300-2 3/4 903 (1000-2 3/4)	1380-3 983 (1000-3)

MIRL Rwy 7-25 and 14-32 **Ⓛ**

FAF to MAP 4.4 NM

Knots	60	90	120	150	180
Min:Sec	4:24	2:56	2:12	1:46	1:28

# ILS or LOC RWY 7

SE-4, 02 DEC 2021 to 30 DEC 2021

SE-4, 02 DEC 2021 to 30 DEC 2021