

WAAS CH <b>82509</b> <b>W21A</b>	APP CRS <b>211°</b>	Rwy Idg TDZE Apt Elev	<b>4200</b> <b>823</b> <b>823</b>
--	------------------------	-----------------------------	---

# RNAV (GPS) RWY 21

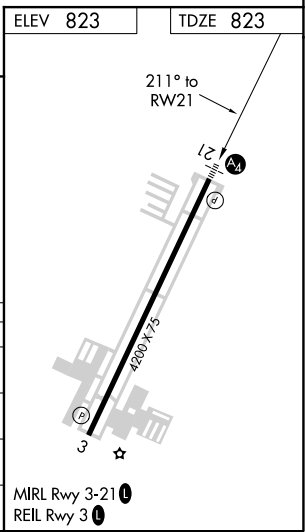
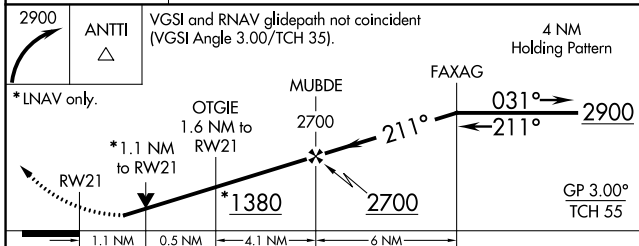
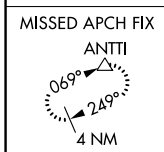
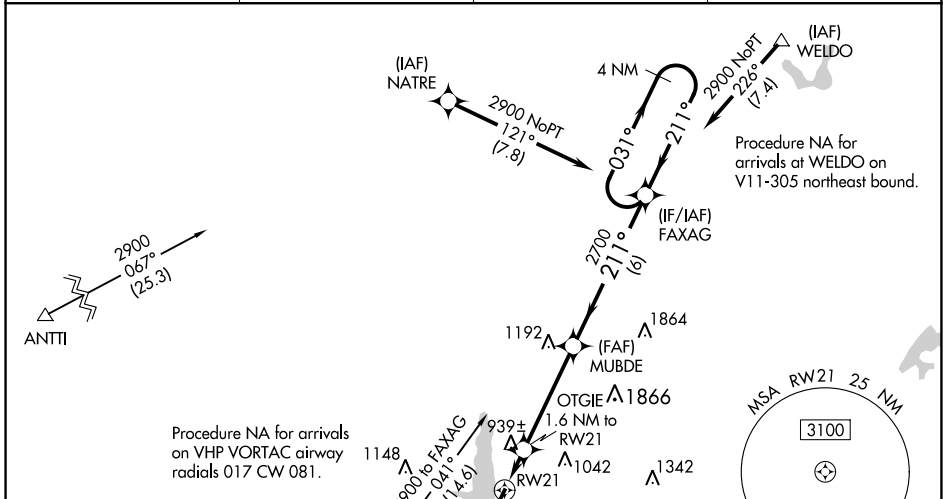
EAGLE CREEK AIRPARK (EYE)

**⚠** For uncompensated Baro-VNAV systems, LNAV/VNAV NA below 0°C (32°F) or above 54°C (130°F). DME/DME RNP-0.3 NA. For inoperative MAL S, increase LPV visibility all Cats to 7/8 mile. Inoperative table does not apply to LNAV/VNAV. Helicopter visibility reduction below 3/4 SM NA.

MALS

MISSED APPROACH: Climbing right turn to 2900 direct ANTTI and hold.

ASOS <b>121.575</b>	INDIANAPOLIS APP CON <b>119.05 317.8</b>	CLNC DEL <b>128.6</b>	UNICOM <b>122.8 (CTAF)</b>
------------------------	---	--------------------------	-------------------------------



CATEGORY	A	B	C	D
LPV DA	1091-3/4	268 (300-3/4)		NA
LNAV/VNAV DA	1076-3/4	253 (300-3/4)		NA
LNAV MDA	1200-3/4	377 (400-3/4)		NA
CIRCLING	1320-1	497 (500-1)	1500-2 677 (700-2)	NA

EC-2, 02 DEC 2021 to 30 DEC 2021

EC-2, 02 DEC 2021 to 30 DEC 2021