

APP CRS	Rwy Idg	7098
120°	TDZE	4123
	Apt Elev	4124

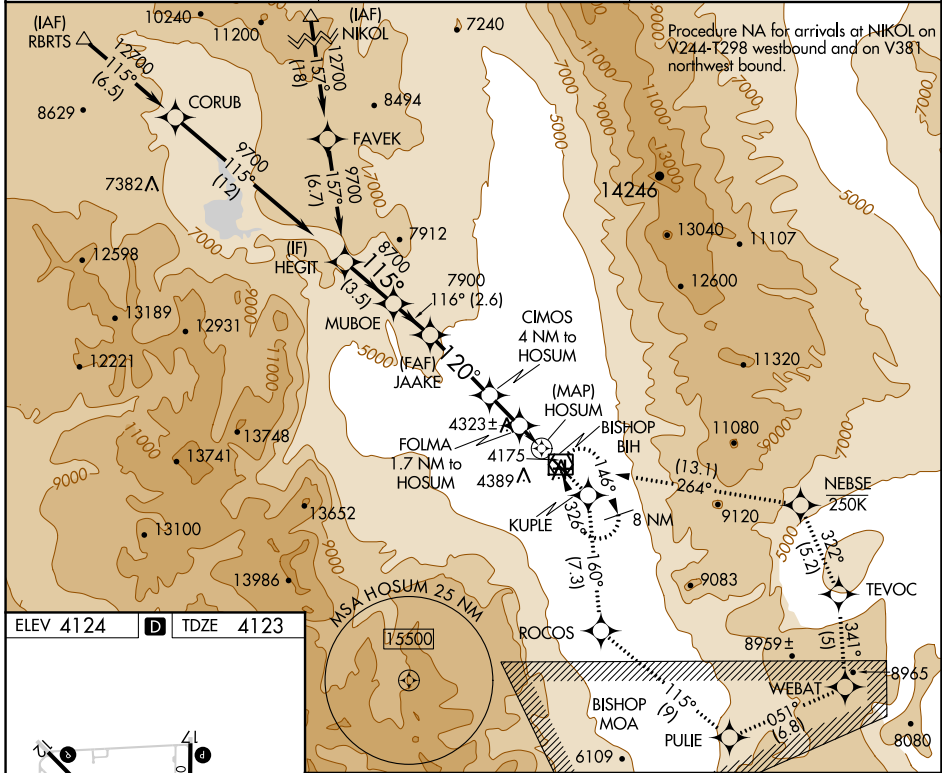
RNAV (GPS) Z RWY 12

BISHOP (BIH)

⚠ DME/DME RNP-0.3 NA
 Missed approach requires minimum climb of 325 feet per NM to 11000; if unable, see RNAV (GPS) Y RWY 12.

⚠ MISSED APPROACH: (Do not exceed 250 KIAS until NEBSE)
 Climb to 13000 direct KUPLE and on track 160° to ROCOS and on track 115° to PULIE and on track 051° to WEBAT and on track 341° to TEVOC and on track 322° to NEBSE and on track 264° to BIH VOR/DME and hold.

ASOS 119.025	OAKLAND CENTER 125.75 284.65	UNICOM 123.0 (CTAF)
------------------------	--	-------------------------------



ELEV 4124	D	TDZE 4123
-----------	----------	-----------



	HEGIT	MUBOE	JAAKE	KUPLE	ROCOS
	9700	8700	7900	6200	5200
	Visual Segment - Obstacles.			13000	tr 160°
				CIMOS 4 NM to HOSUM	FOLMA 1.7 NM to HOSUM
				HOSUM	
				3.5 NM	2.6 NM
				4.5 NM	2.3 NM
				1.7 NM	1 NM
CATEGORY	A	B	C	D	
LNAV MDA	4580-1¼			457 (500-1¼)	NA
CIRCLING	6420-1¼	6420-1½	6420-3	NA	
	2296 (2300-1¼)		2296 (2300-1½)		2296 (2300-3)

MIRL Rwy 8-26, 12-30, and 17-35
 REL Rwy 12, 17, 30 and 35

SW-2, 02 DEC 2021 to 30 DEC 2021

SW-2, 02 DEC 2021 to 30 DEC 2021