

WAAS CH <b>93835</b> W22A	APP CRS <b>220°</b>	Rwy Idg TDZE Apt Elev	<b>5002</b> <b>182</b> <b>182</b>
---------------------------------	------------------------	-----------------------------	---

# RNAV (GPS) RWY 22

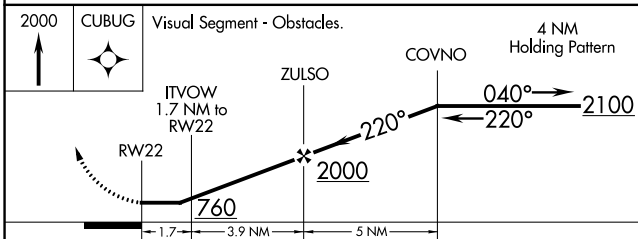
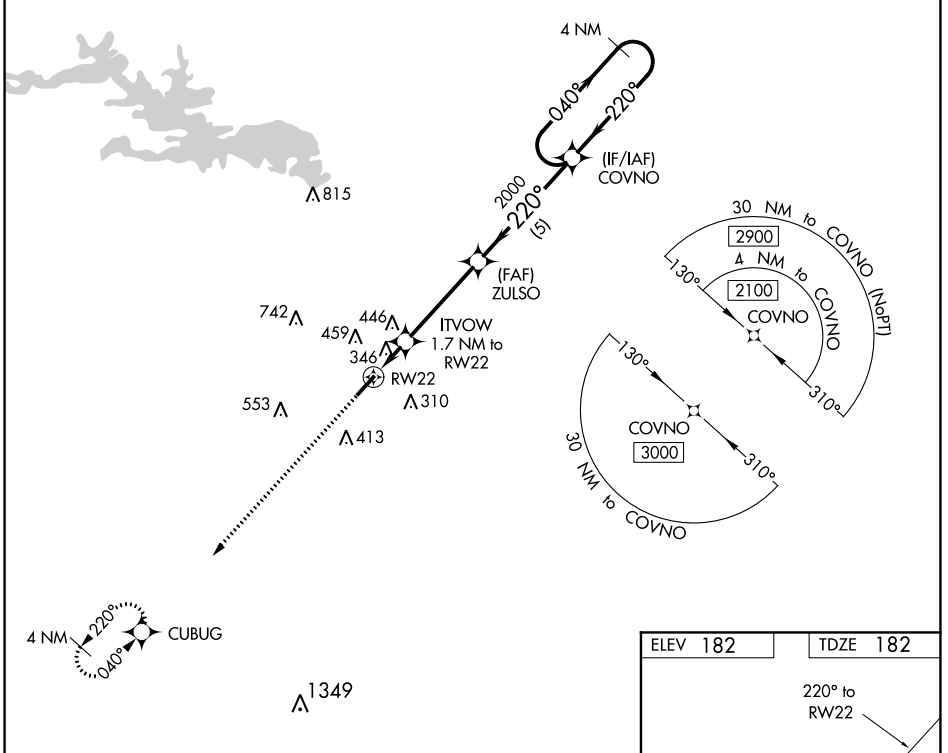
DEXTER B FLORENCE MEMORIAL FIELD (ADF)

**▽** DME/DME RNP-0.3 NA. When local altimeter setting not received, use Hot Springs altimeter setting and increase all MDAs 120 feet, and increase LP and LNAV Cat C visibility  $\frac{3}{8}$  SM and Circling Cat C visibility  $\frac{1}{2}$  mile. Night landing: Rwy 22 NA. Helicopter visibility reduction below 1 SM NA.

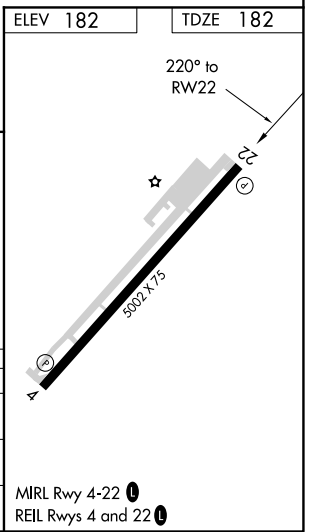
**△** NA

MISSED APPROACH: Climb to 2000 direct CUBUG and hold.

AWOS-3PT <b>118.175</b>	MEMPHIS CENTER <b>128.475 377.15</b>	UNICOM <b>122.7 (CTAF) 0</b>
----------------------------	---	---------------------------------



CATEGORY	A	B	C	D
LP MDA	600-1	418 (500-1)	600-1 $\frac{3}{8}$ 418 (500-1 $\frac{3}{8}$ )	NA
LNAV MDA	680-1	498 (500-1)	680-1 $\frac{3}{8}$ 498 (500-1 $\frac{3}{8}$ )	NA
<b>C</b> CIRCLING	760-1 578 (600-1)	800-1 618 (700-1)	1040-2 $\frac{1}{2}$ 858 (900-2 $\frac{1}{2}$ )	NA



SC-1, 02 DEC 2021 to 30 DEC 2021

SC-1, 02 DEC 2021 to 30 DEC 2021