

WAAS CH <b>70517</b> <b>W21A</b>	APP CRS <b>209°</b>	Rwy Idg <b>4400</b> TDZE <b>416</b> Apt Elev <b>416</b>
--	------------------------	---

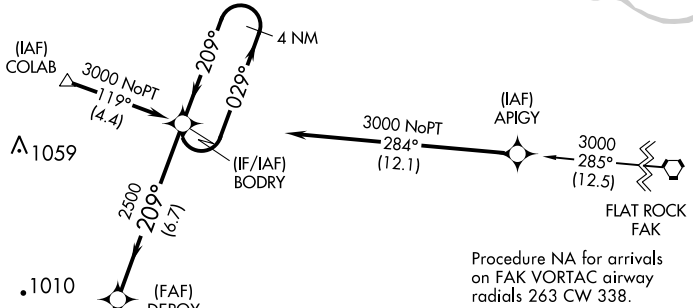
# RNAV (GPS) RWY 21

FARMVILLE RGNL (FVX)

**⚠** Baro-VNAV NA when using Lynchburg altimeter setting. For uncompensated Baro-VNAV systems, LNAV/VNAV NA below -1.5°C (5°F) or above 54°C (130°F). DME/DME RNP-0.3 NA. When local altimeter setting not received, use Lynchburg altimeter setting and increase all DA 158 feet and all MDA 160 feet. Increase LPV all Cats ½ mile; increase LNAV/VNAV visibility all Cats and Circling Cat C visibility ⅔ mile, increase LNAV Cat C visibility ⅓ mile. Helicopter visibility reduction below 1 SM NA.

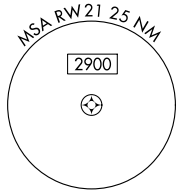
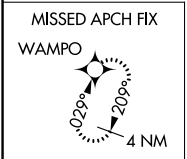
**MISSED APPROACH:**  
Climb to 3000 direct WAMPO and hold.

AWOS-3 <b>132.725</b>	ROANOKE APP CON <b>135.0 254.325</b>	GCO <b>135.075</b>	UNICOM <b>122.8 (CTAF) 0</b>
--------------------------	---	-----------------------	---------------------------------

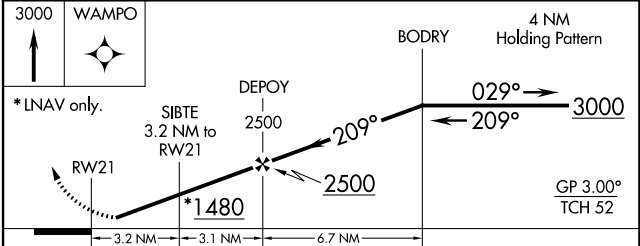
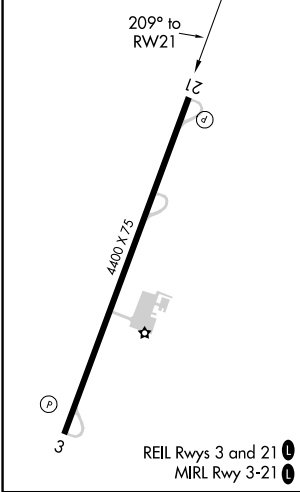


NE-3, 02 DEC 2021 to 30 DEC 2021

NE-3, 02 DEC 2021 to 30 DEC 2021



ELEV <b>416</b>	TDZE <b>416</b>
-----------------	-----------------



CATEGORY	A	B	C	D
LPV DA	696-1 280 (300-1)			NA
LNAV/VNAV DA	866-1½ 450 (500-1½)			NA
LNAV MDA	860-1 444 (500-1)	860-1½ 444 (500-1½)		NA
CIRCLING	900-1 484 (500-1)	1000-1½ 584 (600-1½)		NA