

WAAS CH 49017 W03A	APP CRS 029°	Rwy Idg 4400 TDZE 410 Apt Elev 416
--	------------------------	---

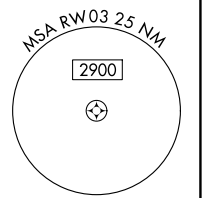
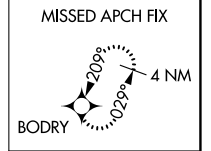
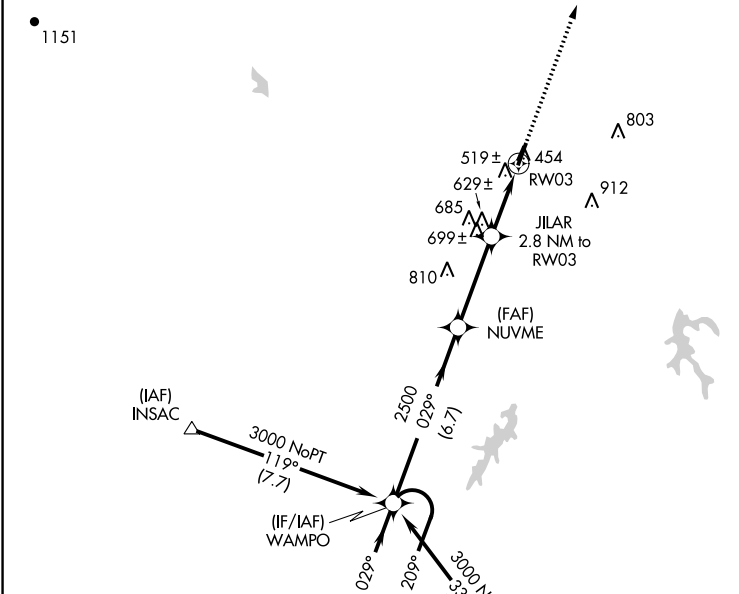
RNAV (GPS) RWY 3

FARMVILLE RGNL (FVX)

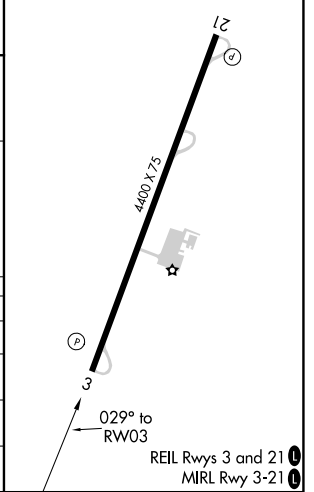
⚠ Baro-VNAV NA when using Lynchburg altimeter setting. For uncompensated Baro-VNAV systems, LNAV/VNAV NA below -15°C (5°F) or above 54°C (130°F). Straight-in/Circling Rwy 3 procedure NA at night. DME/DME RNP-0.3 NA. When local altimeter setting not received, use Lynchburg altimeter setting and increase all DA 158 feet and all MDA 160 feet. Increase LPV and LNAV/VNAV visibility ½ mile all Cats; LNAV Cat C visibility ¾ mile and Circling Cat C visibility ¾ mile. Helicopter visibility reduction below 1 SM NA.

MISSED APPROACH:
Climb to 3000 direct BODRY and hold.

AWOS-3 132.725	ROANOKE APP CON 135.0 254,325	GCO 135.075	UNICOM 122.8 (CTAF) 0
--------------------------	---	-----------------------	---------------------------------



ELEV 416	TDZE 410
----------	----------



4 NM Holding Pattern	WAMPO	NUVME	JILAR 2.8 NM to RW03	RW03
3000	209°	029°	2500	*1360
GP 3.00°	TCH 56	6.7 NM	3.5 NM	2.8 NM

CATEGORY	A	B	C	D
LPV DA	720-1	310	400-1	NA
LNAV/VNAV DA	812-1 3/8	402	400-1 3/8	NA
LNAV MDA	880-1	470 (500-1)	880-1 3/8 470 (500-1 3/8)	NA
CIRCLING	900-1	484 (500-1)	1000-1 1/2 584 (600-1 1/2)	NA

NE-3, 02 DEC 2021 to 30 DEC 2021

NE-3, 02 DEC 2021 to 30 DEC 2021