

WAAS CH <b>97342</b> <b>W18A</b>	APP CRS <b>175°</b>	Rwy Idg TDZE Apt Elev	<b>4986</b> <b>916</b> <b>925</b>
--	------------------------	-----------------------------	---

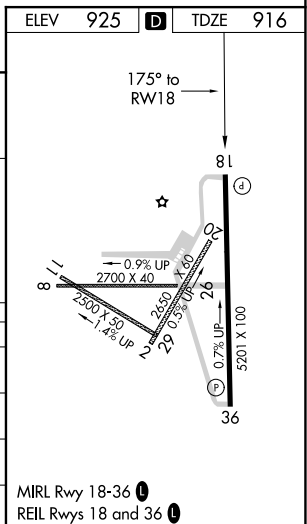
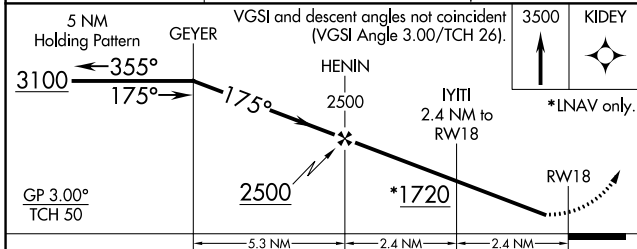
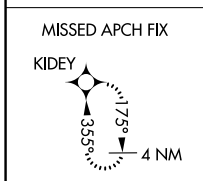
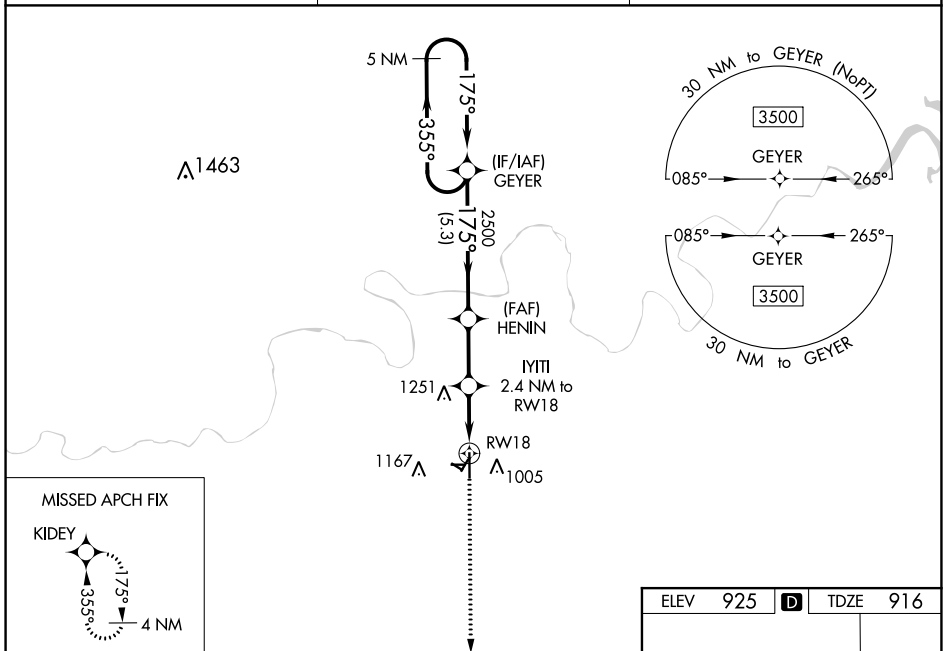
# RNAV (GPS) RWY 18

CUSHING MUNI (CUH)

**▽** Circling NA to Rwy 8 and 26. Baro-VNAV NA when using Chandler altimeter setting.  
**▲** For uncompensated Baro-VNAV systems, LNAV/VNAV NA below -16°C (4°F) or above 54°C (130°F).  
 Rwy 18 helicopter visibility reduction below ¾ NA. DME/DME RNP-0.3 NA.  
 When local altimeter setting not received, use Chandler altimeter setting and increase all DA 41 feet and all visibilities ½ SM. Increase all MDA 60 feet and LNAV Cat C and D visibilities ½ SM  
 Circling NA to Rwy 2, 8, 11, 20, 26, 29

**MISSED APPROACH:**  
Climb to 3500 direct KIDEY and hold.

AWOS-3 <b>118.25</b>	KANSAS CITY CENTER <b>127.8 319.1</b>	UNICOM <b>122.8</b> (CTAF) <b>①</b>
-------------------------	--	--



CATEGORY	A	B	C	D
LPV DA		1166-¾	250 (300-¾)	
LNAV/VNAV DA		1357-1½	441 (500-1½)	
LNAV MDA	1400-1	484 (500-1)	1400-1¾	484 (500-1¾)
<b>C</b> CIRCLING	1600-1	675 (700-1)	1600-2	1600-2¼
			675 (700-2)	675 (700-2¼)

MIRL Rwy 18-36 **①**  
REIL Rwy 18 and 36 **①**

SC-1, 02 DEC 2021 to 30 DEC 2021

SC-1, 02 DEC 2021 to 30 DEC 2021