

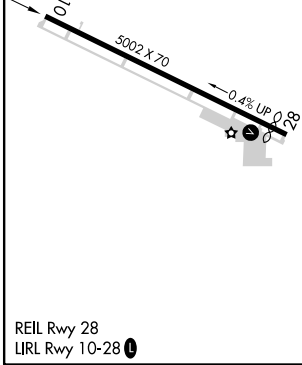
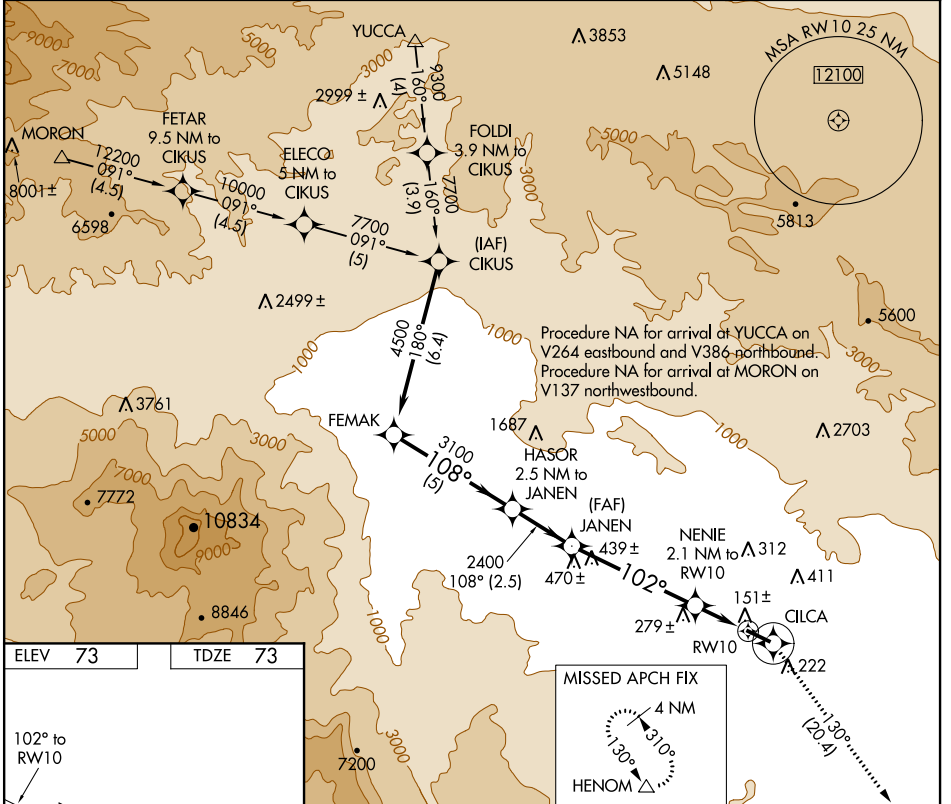
APP CRS 102°	Rwy Idg 5002
	TDZE 73
	Apt Elev 73

RNAV (GPS) RWY 10

BERMUDA DUNES (UDD)

<p>NA GPS or RNP-0.3 required. DME/DME RNP-0.3 NA. Use Jacqueline Cochran Rgnl altimeter setting.</p>	<p>MISSED APPROACH: Climb to 3700 direct CILCA and via 130° track to HENOM and hold.</p>
--	--

TRM ASOS 118.325	SOCAL APP CON* 135.275 251.1	UNICOM 122.8 (CTAF)
----------------------------	--	-------------------------------



ELEV 73	TDZE 73	MISSED APCH FIX			
FEMAK	HASOR 2.5 NM to JANEN	JANEN	NENIE 2.1 NM to RW10	CILCA	HENOM
4500	3100	2400	800	3700	130° tr
Procedure Turn NA	108°	102°	130°		
	5 NM	2.5 NM	4.9 NM	2.1 NM	
CATEGORY	A	B	C	D	
LNAV MDA	480-1	407 (500-1)	480-1¼ 407 (500-1¼)	NA	
CIRCLING	700-1	627 (700-1)	1100-3 1027 (1100-3)	NA	

SW-3, 02 DEC 2021 to 30 DEC 2021

SW-3, 02 DEC 2021 to 30 DEC 2021