

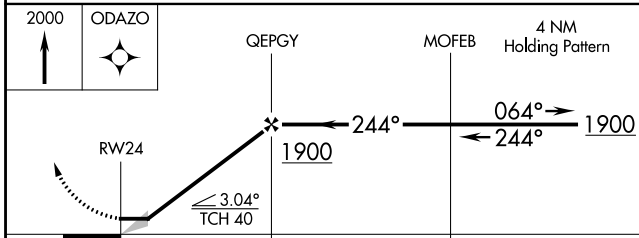
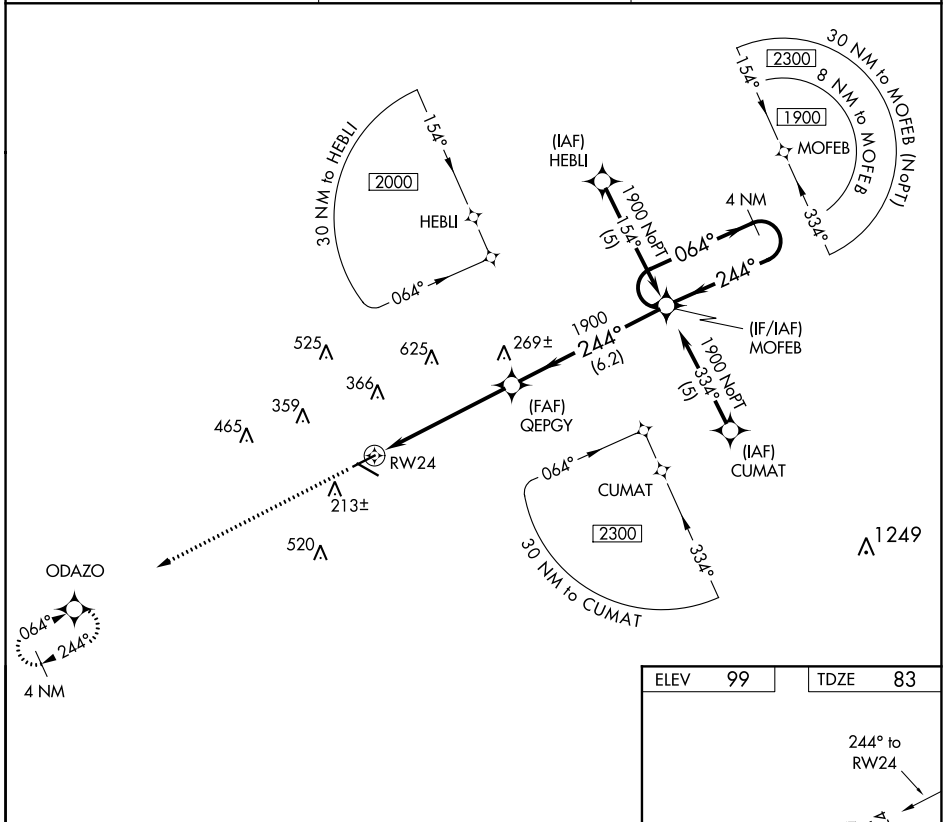
APP CRS	Rwy Idg	5136
244°	TDZE	83
	Apt Elev	99

RNAV (GPS) RWY 24

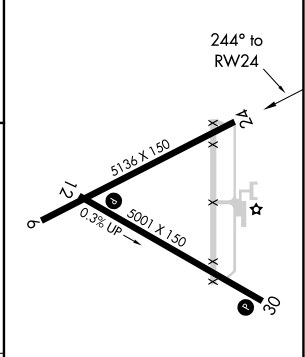
BREWTON MUNI (12J)

RNP APCH.	When local altimeter setting not received use Pensacola altimeter setting and increase all MDA 100 feet; increase LNAV Cats C and D visibility ¼ SM. Procedure NA at night.	MISSED APPROACH: Climb to 2000 direct ODAZO and hold.
-----------	---	---

AWOS-3PT 119.325	PENSACOLA APP CON 127.35 291.625	UNICOM 122.725 (CTAF) 0
----------------------------	--	-----------------------------------



ELEV	99	TDZE	83
------	----	------	----



CATEGORY	A	B	C	D
LNAV MDA	520-1	437 (500-1)	520-1¼	437 (500-1¼)

MIRL Rwy 12-30 0

SE-4, 02 DEC 2021 to 30 DEC 2021

SE-4, 02 DEC 2021 to 30 DEC 2021