

WAAS CH <b>45737</b> <b>W16A</b>	APP CRS <b>155°</b>	Rwy Idg TDZE Apt Elev	<b>4997</b> <b>82</b> <b>83</b>
--	------------------------	-----------------------------	---------------------------------------

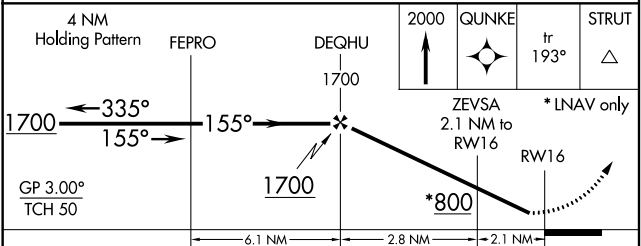
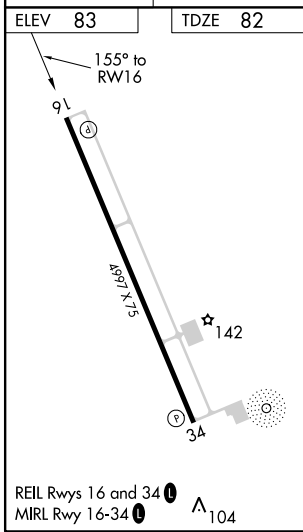
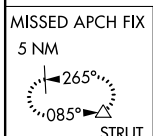
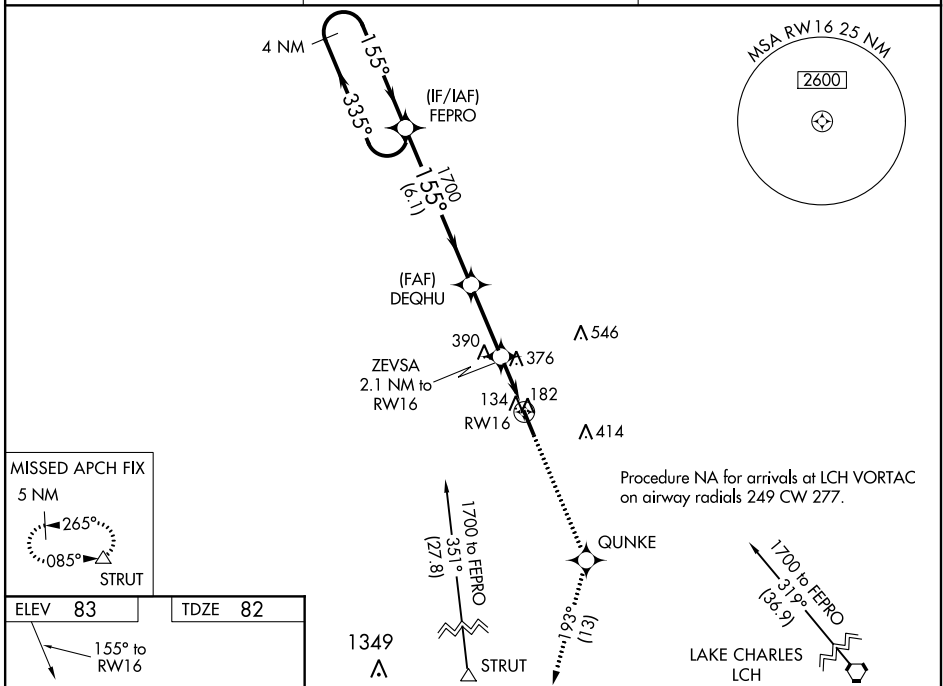
# RNAV (GPS) RWY 16

DE QUINCY INDUSTRIAL AIRPARK (5R8)

**▼** Baro-VNAV NA when using Sulphur altimeter setting. DME/DME RNP-0.3 NA.  
**▲ NA** When local altimeter setting not received, use Sulphur altimeter setting and increase all DA 55 feet and MDA 60 feet, increase LPV visibility all Cats 1/8, LNAV/VNAV all Cats 1/4 and LNAV and Circling Cat C visibility 1/4 mile. For uncompensated Baro-VNAV systems, LNAV/VNAV NA below -15°C (5°F) or above 54°C (130°F). Helicopter visibility reduction below 1 SM NA. Night landing: Rwy 16 NA.

MISSED APPROACH: Climb to 2000 direct GUNKE and on track 193° to STRUT and hold.

AWOS-3PT <b>121.2</b>	LAKE CHARLES APP CON * <b>119.35 282.3</b>	UNICOM <b>122.8 (CTAF) 0</b>
--------------------------	---	---------------------------------



CATEGORY	A	B	C	D
LPV DA	365-1	283 (300-1)		NA
LNAV/VNAV DA	799-2 1/2	717 (800-2 1/2)		NA
LNAV MDA	700-1	618 (700-1)	700-1 3/4 618 (700-1 3/4)	NA
<b>C</b> CIRCLING	700-1 617 (700-1)	740-1 657 (700-1)	740-1 3/4 657 (700-1 3/4)	NA

SC-4, 02 DEC 2021 to 30 DEC 2021

SC-4, 02 DEC 2021 to 30 DEC 2021