

WAAS CH <b>72937</b> <b>W34A</b>	APP CRS <b>339°</b>	Rwy Idg TDZE Apt Elev	<b>5402</b> <b>204</b> <b>207</b>
--	------------------------	-----------------------------	---

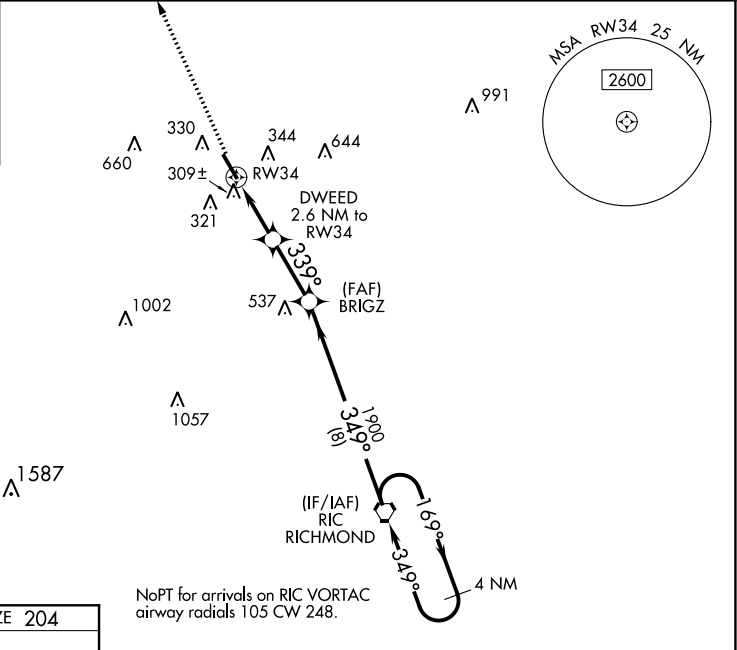
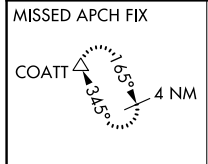
# RNAV (GPS) RWY 34

HANOVER COUNTY MUNI (OFP)

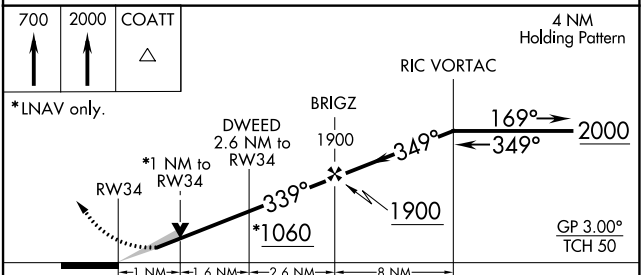
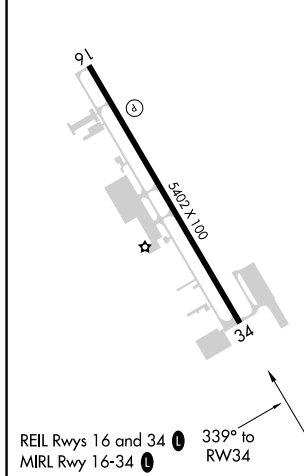
**⚠** For uncompensated Baro-VNAV systems, LNAV/VNAV NA below -11°C (13°F) or above 54°C (130°F). DME/DME RNP-0.3 NA. When local altimeter setting not received, use Richmond Intl altimeter setting and increase all DA 37 feet and all MDA 40 feet; increase LNAV/VNAV all Cats and LNAV Cats C/D visibility 1/8 mile. Baro-VNAV and VDP NA when using Richmond Intl altimeter setting.

**MISSED APPROACH:** Climb to 700 then climb to 2000 direct COATT and hold.

ASOS <b>119.025</b>	POTOMAC APP CON <b>126.75 307.2</b>	CLNC DEL <b>125.4</b>	UNICOM <b>122.7 (CTAF) 0</b>
------------------------	--	--------------------------	---------------------------------



ELEV <b>207</b>	TDZE <b>204</b>
-----------------	-----------------



CATEGORY	A	B	C	D
LPV DA		454-1	250 (300-1)	
LNAV/VNAV DA		493-1	289 (300-1)	
LNAV MDA		560-1	356 (400-1)	
<b>C</b> CIRCLING	660-1	453 (500-1)	900-2 693 (700-2)	1020-2 <sup>3</sup> / <sub>4</sub> 813 (900-2 <sup>3</sup> / <sub>4</sub> )

NE-3, 02 DEC 2021 to 30 DEC 2021

NE-3, 02 DEC 2021 to 30 DEC 2021