

VORTAC RIC <b>114.1</b> Chan <b>88</b>	APP CRS <b>165°</b>	Rwy Idg TDZE Apt Elev	<b>5402</b> <b>207</b> <b>207</b>
--	------------------------	-----------------------------	---

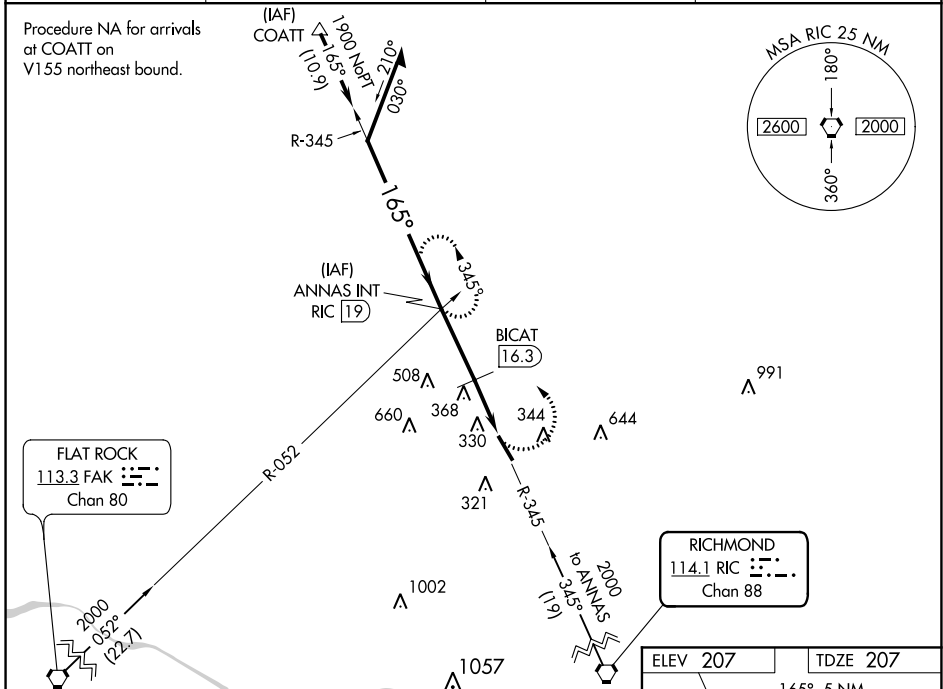
# VOR RWY 16

HANOVER COUNTY MUNI (OFP)

**⚠** When local altimeter setting not received, use Richmond Intl altimeter setting and increase all MDA 40 feet. Rwy 16 helicopter visibility reduction below ¼ SM NA.

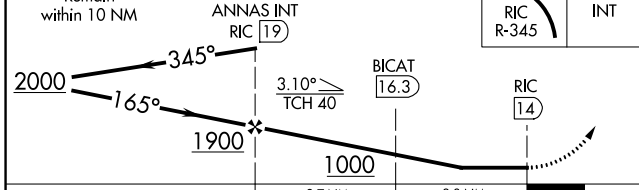
**⚠** MISSED APPROACH: Climbing left turn to 2000 via RIC R-345 to ANNAS INT/19 DME and hold.

ASOS <b>119.025</b>	POTOMAC APP CON <b>126.75 307.2</b>	CLNC DEL <b>125.4</b>	UNICOM <b>122.7 (CTAF)</b> <b>📻</b>
------------------------	--	--------------------------	--

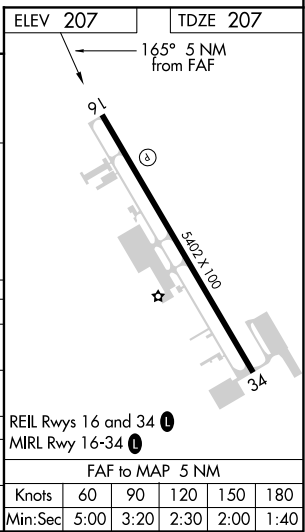


Remain within 10 NM

VGSI and descent angles not coincident (VGSI Angle 3.00/TCH 40).



CATEGORY	A	B	C	D
S-16	1000-1 793 (800-1)	1000-1¼ 793 (800-1¼)	1000-2¼ 793 (800-2¼)	1000-2½ 793 (800-2½)
<b>C</b> CIRCLING	1000-1 793 (800-1)	1000-1¼ 793 (800-1¼)	1000-2¼ 793 (800-2¼)	1020-2¾ 813 (900-2¾)
BICAT FIX MINIMUMS (DME REQUIRED)				
S-16	820-1	613 (700-1)	820-1¾	613 (700-1¾)
<b>C</b> CIRCLING	820-1	613 (700-1)	900-2 693 (700-2)	1020-2¾ 813 (900-2¾)



NE-3, 02 DEC 2021 to 30 DEC 2021

NE-3, 02 DEC 2021 to 30 DEC 2021