

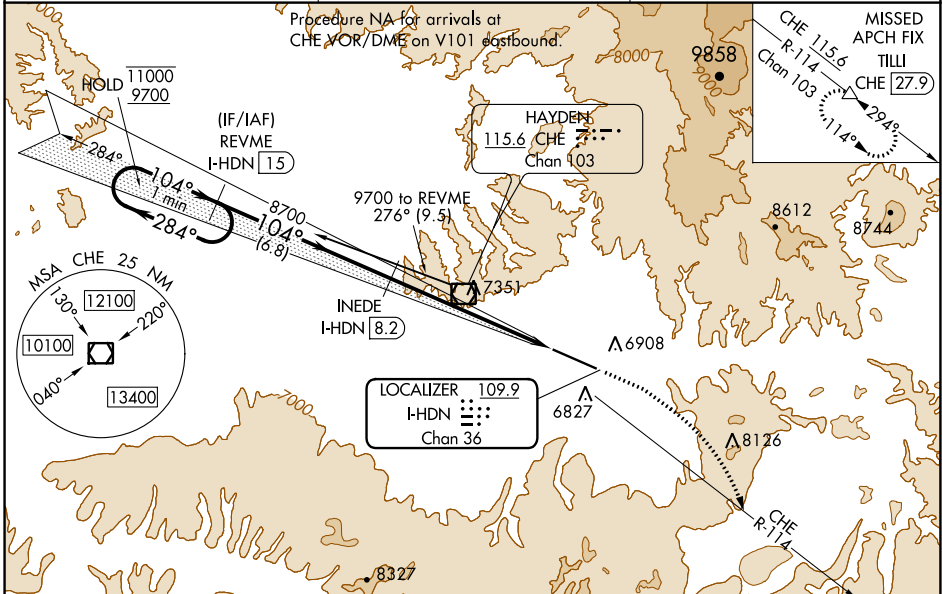
LOC/DME I-HDN <b>109.9</b> Chan <b>36</b>	APP CRS <b>104°</b>	Rwy Idg TDZE Apt Elev <b>9490</b> <b>6591</b> <b>6606</b>
---	------------------------	--

# ILS or LOC RWY 10

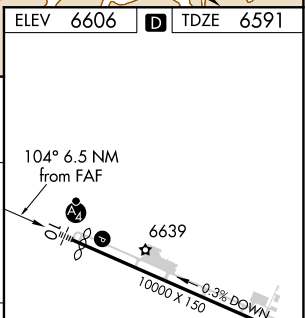
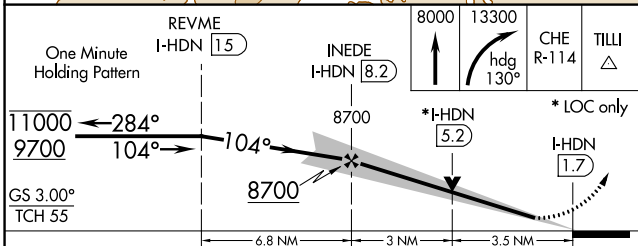
YAMPA VALLEY (HDN)

DME required	MALSF	MISSED APPROACH: Climb to 8000 then climbing right turn to 13300 on heading 130° and on CHE VOR/DME R-114 to TILLI/CHE 27.9 DME and hold, continue climb-in-hold to 13300.
<p>▼ Inoperative table does not apply to # S-ILS 10 all Cats.</p> <p>▲ NA # Missed approach requires a minimum climb of 307 feet per NM to 8700.</p>		

AWOS-3PT <b>119.275</b>	DENVER CENTER <b>120.475 235.975</b>	UNICOM <b>123.0 (CTAF)</b>
----------------------------	---	-------------------------------



ELEV 6606	TDZE 6591
-----------	-----------



CATEGORY	A	B	C	D
# S-ILS 10		6791-¾	200 (200-¾)	
S-ILS 10		7307-2½	716 (800-2½)	
S-LOC 10	7760-1 1169 (1200-1)	7760-1¼ 1169 (1200-1¼)	7760-3	1169 (1200-3)
CIRCLING	7760-1¼ 1154 (1200-1¼)	7760-1½ 1154 (1200-1½)	7760-3 1154 (1200-3)	8180-3 1574 (1600-3)

REIL Rwy 28	HIRL Rwy 10-28
-------------	----------------

SW-1, 02 DEC 2021 to 30 DEC 2021

SW-1, 02 DEC 2021 to 30 DEC 2021