

WAAS CH 77929 W11A	APP CRS 111°	Rwy Idg TDZE Apt Elev	5091 1988 1989
--	------------------------	-----------------------------	---

RNAV (GPS) RWY 11

L M CLAYTON (OLF')

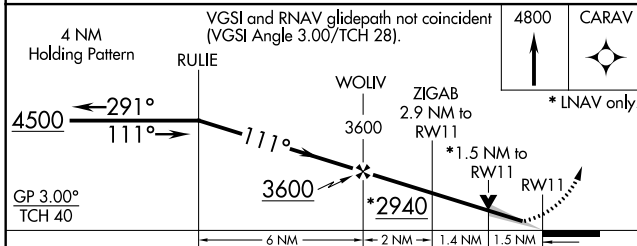
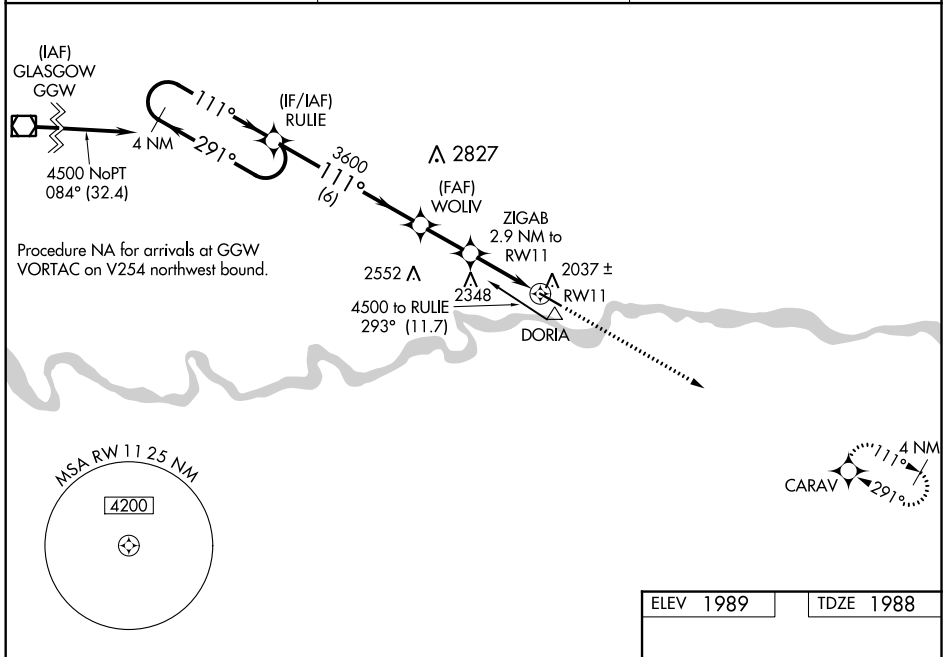
⚠ For uncompensated Baro-VNAV systems, LNAV/VNAV NA below -18°C (0°F) or above 54°C (130°F). DME/DME RNP-0.3 NA. When local altimeter not received, use Glasgow altimeter setting and increase all DA 141 feet and all MDA 160 feet and increase LPV all Cats visibility 3/8 mile; LNAV/VNAV all Cats 1/2 mile; LNAV Cats C/D 1/2 mile; Circling Cat C 1/2 mile and Cat D 1/4 mile. Baro-VNAV and VDP NA with Glasgow altimeter setting.

MISSED APPROACH:
Climb to 4800 direct CARAV and hold.

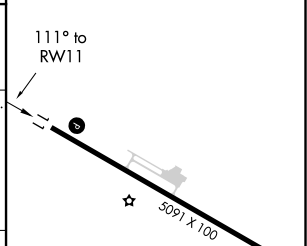
ASOS
118.325

SALT LAKE CENTER
126.85 305.2

UNICOM
122.8 (CTAF) 0



ELEV 1989	TDZE 1988
-----------	-----------



CATEGORY	A	B	C	D
LPV DA		2188-3/4	200 (200-3/4)	
LNAV/VNAV DA		2266-7/8	278 (300-7/8)	
LNAV MDA	2500-1	512 (600-1)	2500-1 3/8	512 (600-1 3/8)
CIRCLING	2500-1	511 (600-1)	2500-1 1/2	2540-2 551 (600-2)

MIRL Rwy 11-29 0
REIL Rwy 11-29 0

NW-1, 02 DEC 2021 to 30 DEC 2021

NW-1, 02 DEC 2021 to 30 DEC 2021