

WAAS CH 49229 W29A	APP CRS 291°	Rwy Idg TDZE Apt Elev	5091 1989 1989
---------------------------------	------------------------	-----------------------------	---

RNAV (GPS) RWY 29

L M CLAYTON (OLF')

⚠ For uncompensated Baro-VNAV systems, LNAV/VNAV NA below -18°C (0°F) or above 54°C (130°F). DME/DME RNP-0.3 NA. When local altimeter setting not received, use Glasgow altimeter setting and increase all DA 141 feet and all MDA 160 feet and increase LPV all Cats visibility 3/8 mile, LNAV/VNAV all Cats visibility 1/2 mile, LNAV Cats C/D visibility 1/2 mile, and Circling Cats C/D visibility 1/4 mile. Baro-VNAV and VDP NA with Glasgow altimeter setting.

MISSED APPROACH:
Climb to 4500 direct
RULIE and hold.

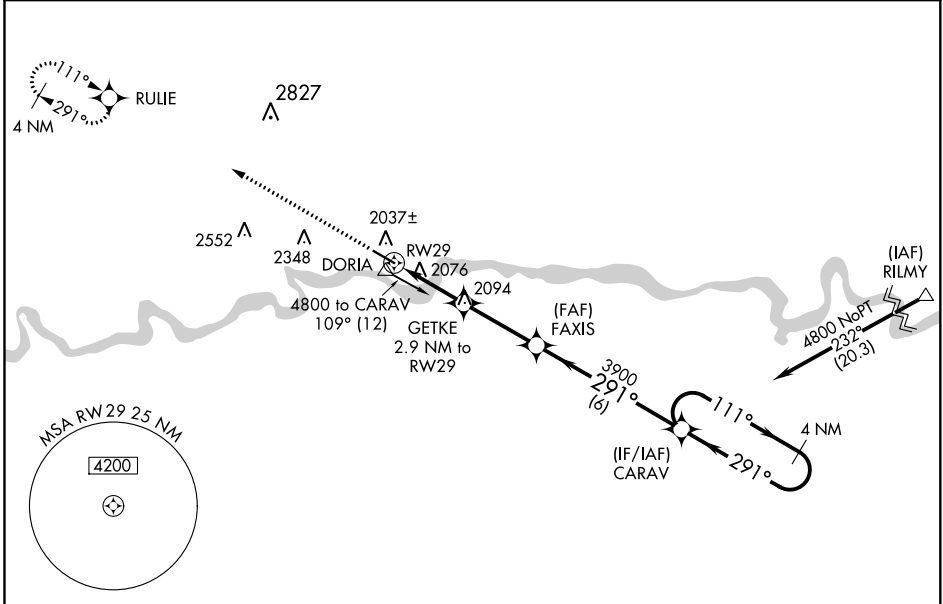
ASOS
118.325

SALT LAKE CENTER
126.85 305.2

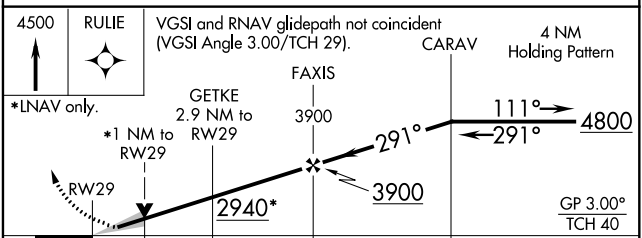
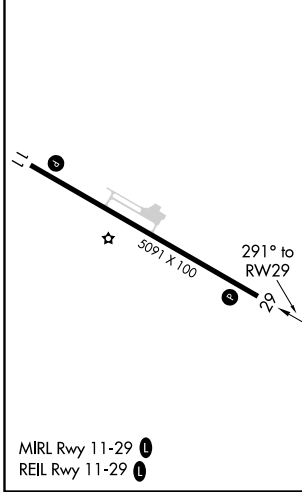
UNICOM
122.8 (CTAF) 0

NW-1, 02 DEC 2021 to 30 DEC 2021

NW-1, 02 DEC 2021 to 30 DEC 2021



ELEV 1989	TDZE 1989
-----------	-----------



CATEGORY	A	B	C	D
LPV DA		2189-3/4	200 (200-3/4)	
LNAV/VNAV DA		2239-7/8	250 (300-7/8)	
LNAV MDA		2340-1	351 (400-1)	
CIRCLING	2480-1	491 (500-1)	2480-1 1/2 491 (500-1 1/2)	2540-2 551 (600-2)