

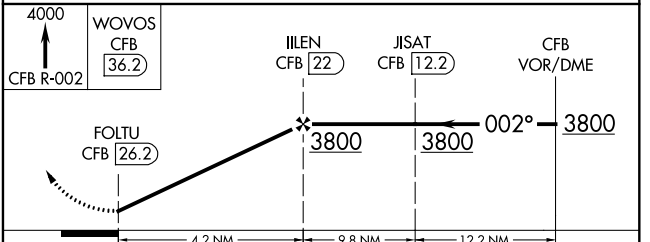
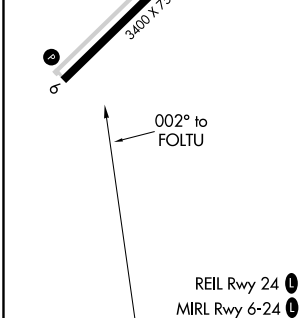
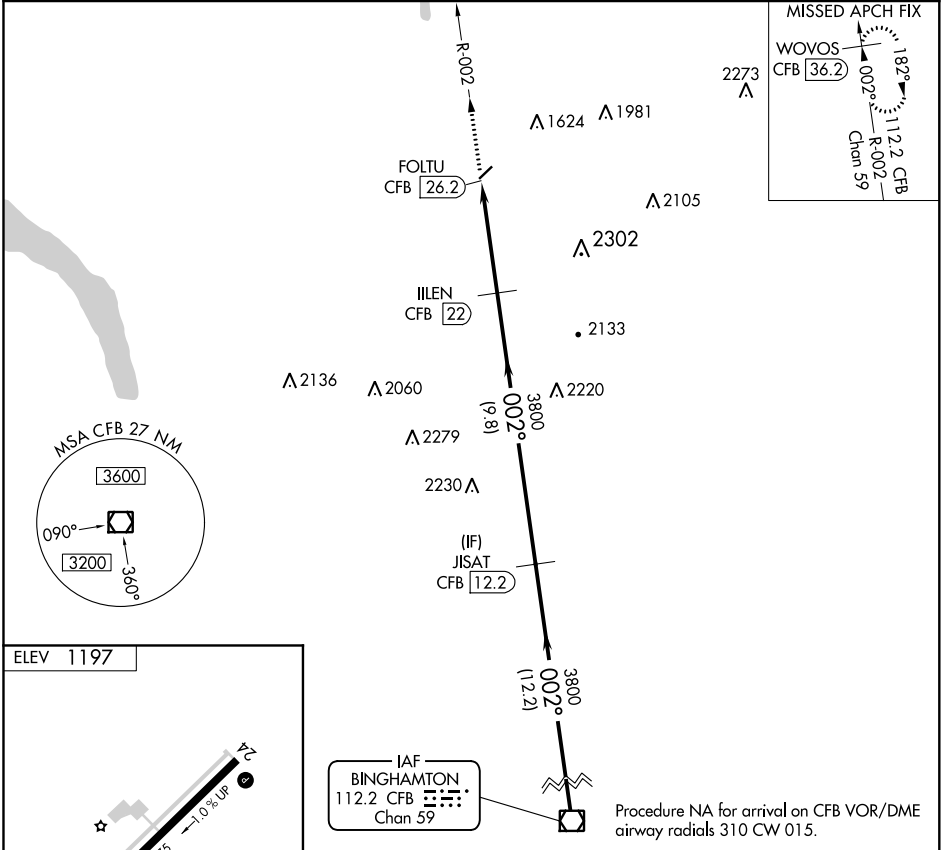
VOR/DME CFB <b>112.2</b> Chan <b>59</b>	APP CRS <b>002°</b>	Rwy Idg TDZE Apt Elev	<b>N/A</b> <b>N/A</b> <b>1197</b>
---	------------------------	-----------------------------	---

**VOR-A**

CORTLAND COUNTY/CHASE FLD (N03)

DME required.		MISSED APPROACH: Climb to 4000 on CFB VOR/DME R-002 to WOVOS/36.2 DME and hold.		
---------------	--	---	--	--

AWOS-3 <b>132.225</b>	BINGHAMTON APP CON ★ <b>118.6 257.625</b> (S-SE)	ELMIRA APP CON ★ <b>124.3 257.8</b> (W)	SYRACUSE APP CON <b>126.125 269.125</b> (N)	UNICOM <b>122.8</b> (CTAF)
--------------------------	---	--	--	-------------------------------



CATEGORY	A	B	C	D
CIRCLING	2380-1¼ 1183 (1200-1¼)	2380-1½ 1183 (1200-1½)	2380-3 1183 (1200-3)	NA

**VOR-A**

NE-2, 02 DEC 2021 to 30 DEC 2021

NE-2, 02 DEC 2021 to 30 DEC 2021