

BEREE ONE ARRIVAL (RNAV)

AL-6039 (FAA)

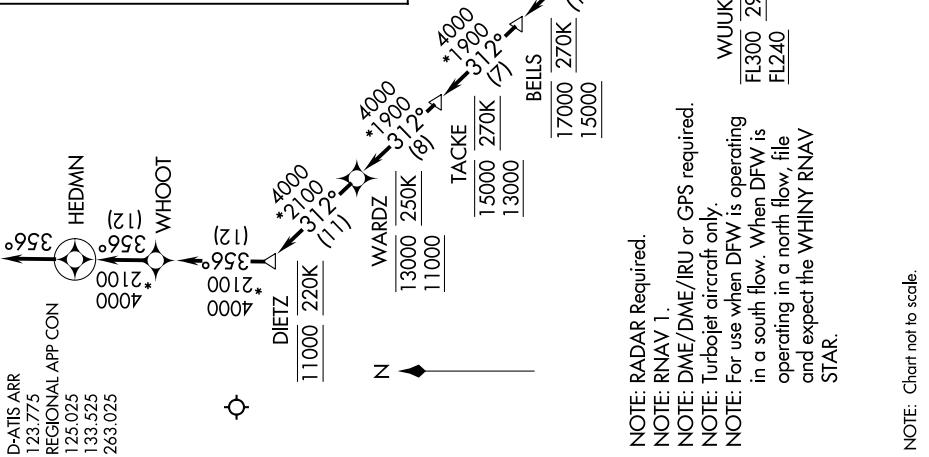
DALLAS-FORT WORTH, TEXAS

SC-2, 02 DEC 2021 to 30 DEC 2021

ARRIVAL ROUTE DESCRIPTION

- CRIED TRANSITION (CRIED.BEREE1):
- OUTLN TRANSITION (OUTLN.BEREE1): (ATC assigned only.)
- PNUTS TRANSITION (PNUTS.BEREE1):
- POPSY TRANSITION (POPSY.BEREE1): (ATC assigned only.)
- POWND TRANSITION (POWND.BEREE1): (ATC assigned only.)
- STUFT TRANSITION (STUFT.BEREE1):
- YUYUN TRANSITION (YUYUN.BEREE1):

From BEREE on track 312° to cross BELLS between 15000 and 17000 and at 270K, then on track 312° to cross TACKLE between 13000 and 15000 and at 270K, then on track 312° to cross WARDZ between 11000 and 13000 and at 250K, then on track 312° to cross DIETZ at 11000 and at 220K, then on track 356° to WHOOT, then on track 356° to HEDMN, then on track 356°. Expect RADAR vectors to final approach course.



BEREE ONE ARRIVAL (RNAV)

(BEREE.BEREE1) 26MAY16

DALLAS-FORT WORTH, TEXAS

DALLAS-FORT WORTH INTL (DFW)

NOTE: Chart not to scale.

SC-2, 02 DEC 2021 to 30 DEC 2021