

# CEDAR CREEK ONE ARRIVAL

## Arrival Routes

DALLAS-FORT WORTH, TEXAS

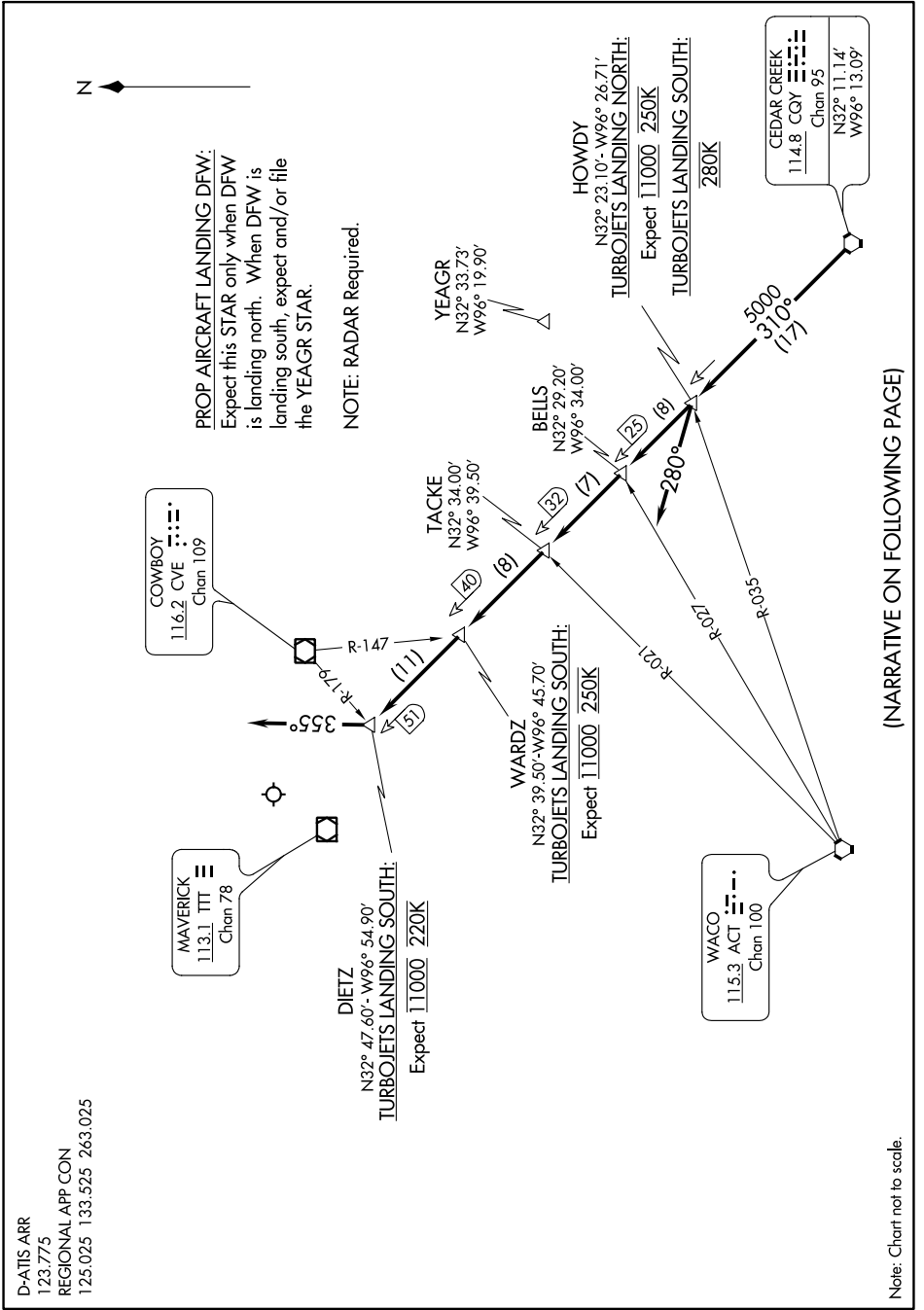
SC-2, 02 DEC 2021 to 30 DEC 2021

D-ATIS ARR  
123.775  
REGIONAL APP CON  
125.025 133.525 263.025

# CEDAR CREEK ONE ARRIVAL

## Arrival Routes

DALLAS-FORT WORTH, TEXAS



(NARRATIVE ON FOLLOWING PAGE)

SC-2, 02 DEC 2021 to 30 DEC 2021

Note: Chart not to scale.