

FORCK TWO DEPARTURE (RNAV)

AL-6039 (FAA)

DALLAS-FORT WORTH, TEXAS

SC-2, 02 DEC 2021 to 30 DEC 2021

TOP ALTITUDE:
RWY 17C/R, 18L/R,
35C/L, 36L/R: 10000
RWY 31L/R: 5000

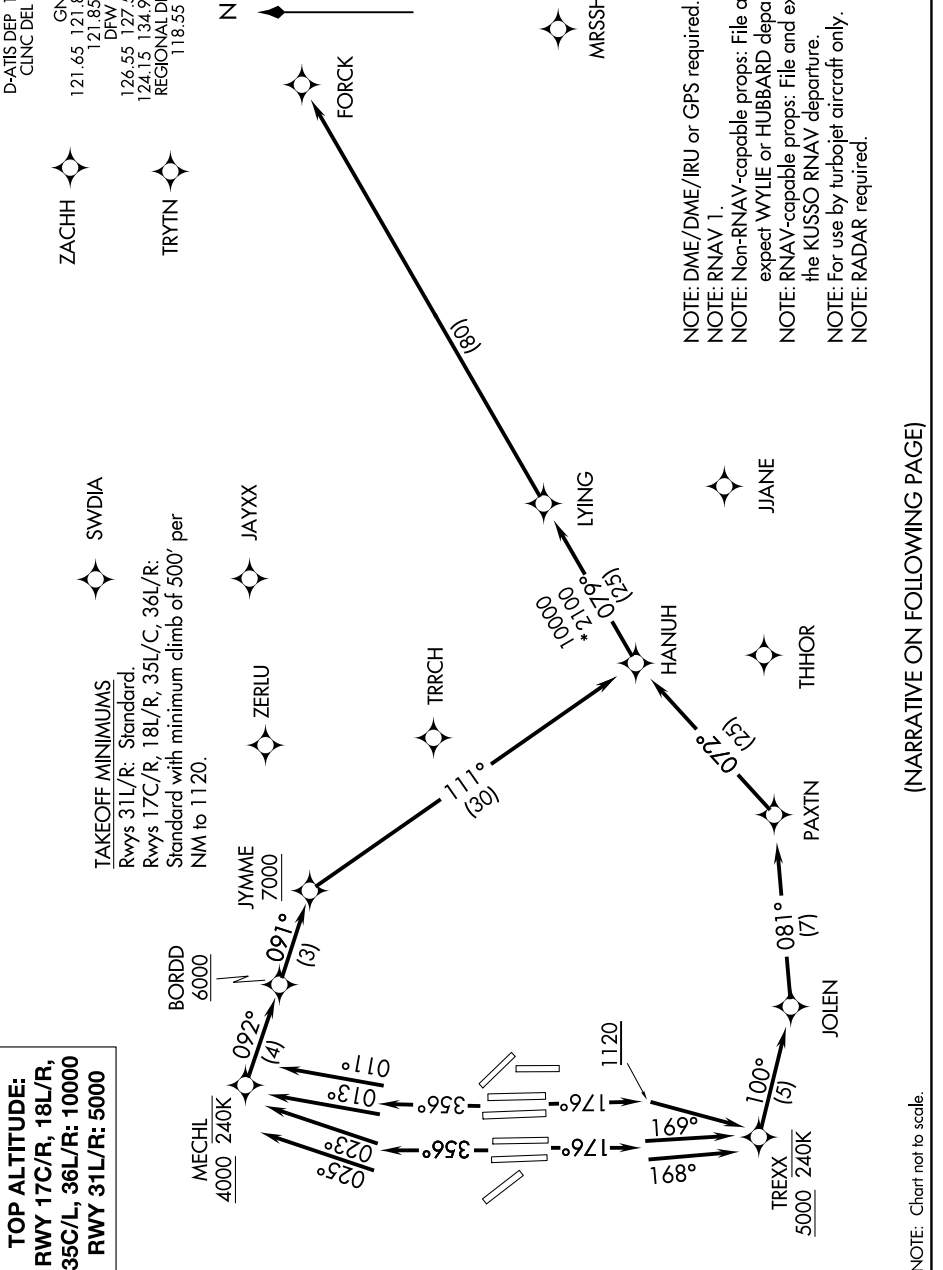
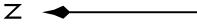
TAKEOFF MINIMUMS

Rwys 31L/R: Standard.

Rwys 17C/R, 18L/R, 35L/C, 36L/R:

Standard with minimum climb of 500' per NM to 1120.

D-ATIS DEP 135.975
CINC DEL 128.25
CPOLC
GND CON
121.65 121.8 (EAST)
121.85 (WEST)
DRW TOWER
126.55 127.5 (EAST)
124.15 134.9 (WEST)
REGIONAL DEP CON
118.55 290.35



- NOTE: DME/DME/IRU or GPS required.
- NOTE: RNAV 1.
- NOTE: Non-RNAV-capable props: File and expect WYLLIE or HUBBARD departure.
- NOTE: RNAV-capable props: File and expect the KUSSO RNAV departure.
- NOTE: For use by turbojet aircraft only.
- NOTE: RADAR required.

(NARRATIVE ON FOLLOWING PAGE)

NOTE: Chart not to scale.

SC-2, 02 DEC 2021 to 30 DEC 2021