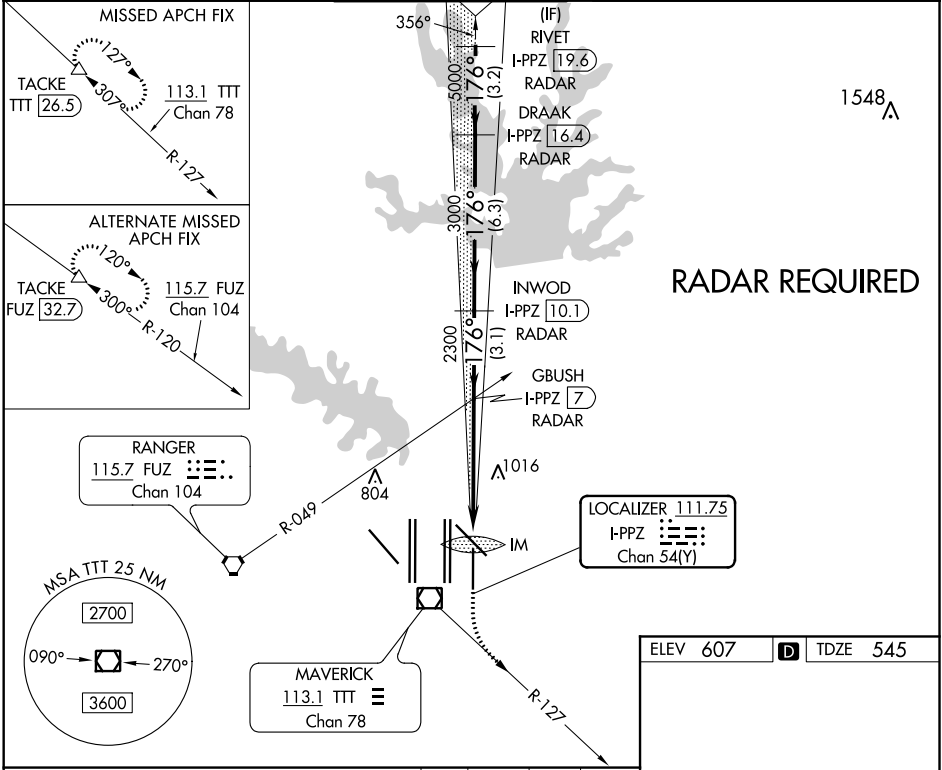


LOC/DME I-PPZ <b>111.75</b> Chan 54 (Y)	APP CRS <b>176°</b>	Rwy Idg TDZE Apt Elev	<b>8500</b> <b>545</b> <b>607</b>
---	------------------------	-----------------------------	---

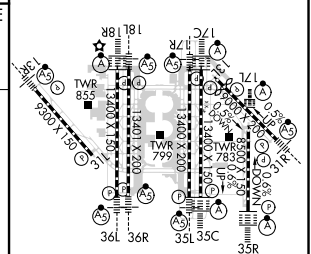
**ILS RWY 17L (SA CAT I)**  
DALLAS-FORT WORTH INTL (DFW)

⚠ Simultaneous approach authorized with Rwy 17C/R and Rwy 18L/R. DME required. Requires specific OPSPEC, MSPEC, or LOA approval and use of HUD to DA.		ALSF-2 	MISSED APPROACH: Climb to 1020 then climbing left turn to 3000 on heading 151° and TTT VOR/DME R-127 to TACKE/TTT 26.5 DME and hold.		
D-ATIS ARR <b>123.775</b> DEP <b>135.925</b>	REGIONAL APP CON <b>119.4</b>	DFW TOWER <b>126.55 127.5 EAST</b> <b>124.15 134.9 WEST</b>	GND CON <b>121.65 121.8 EAST</b> <b>121.85 WEST</b>	CLNC DEL <b>128.25</b>	CPDLC



**RADAR REQUIRED**

ELEV 607	<b>D</b>	TDZE 545
----------	----------	----------



VGSi and ILS glidepath not coincident (VGSi Angle 3.00/TCH 77).				1020	3000	TACKE
RIVET I-PPZ 19.6 RADAR	DRAAK I-PPZ 16.4 RADAR	INWOD I-PPZ 10.1 RADAR	GBUSH I-PPZ 7 RADAR	↑	hdg 151°	TTT R-127
5000	5000	3000	2300			
GS 3.00° TCH 56						
3.2 NM		6.3 NM	3.1 NM	5.4 NM		880'
CATEGORY	A	B	C	D		
S-ILS 17L	RA 165/14		150 DA 695			
<b>SA CATEGORY I ILS - SPECIAL AIRCREW &amp; AIRCRAFT CERTIFICATION REQUIRED</b>						

HIRL all Rwys  
REL Rwy 13L and 31L  
TDZ/CL all Rwys except 13L and 31L

SC-2, 02 DEC 2021 to 30 DEC 2021

SC-2, 02 DEC 2021 to 30 DEC 2021